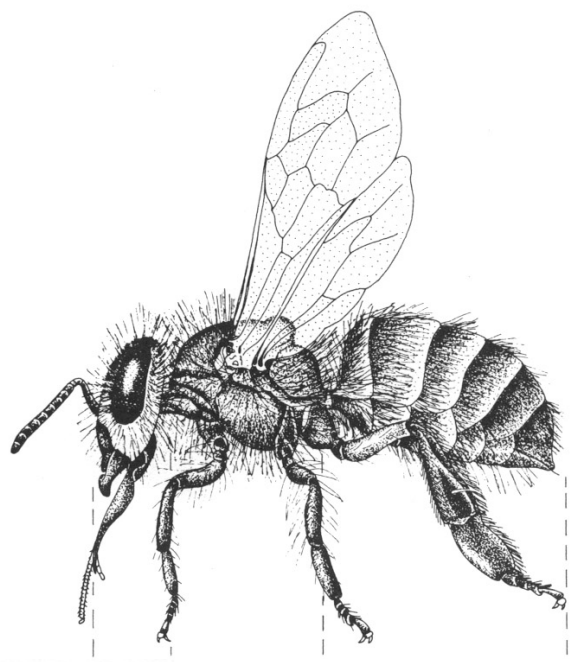


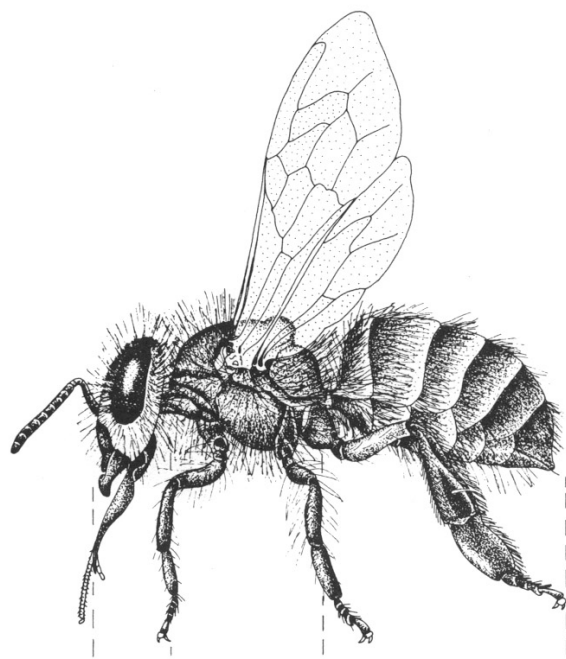
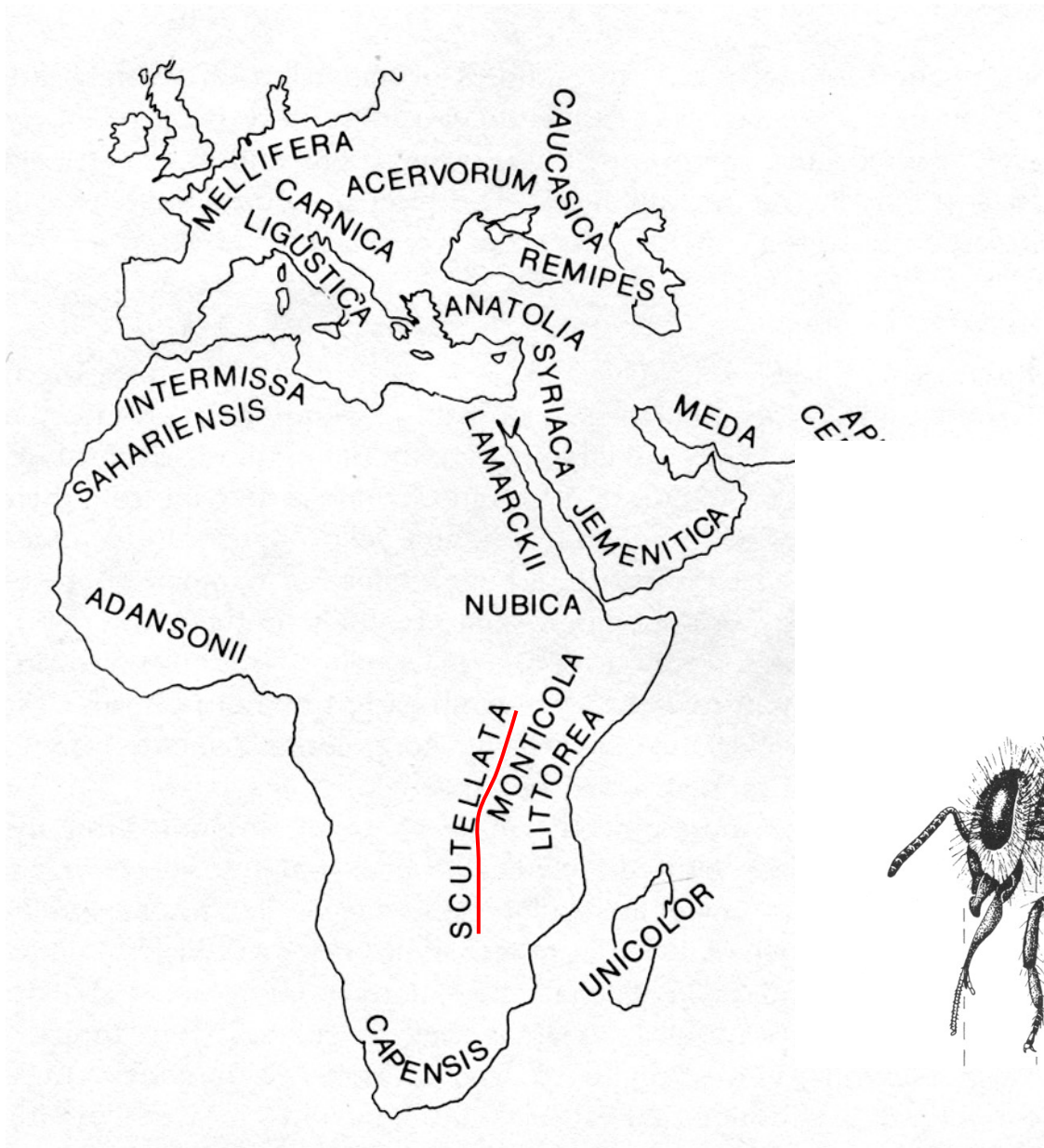
# Africanized Honey Bees

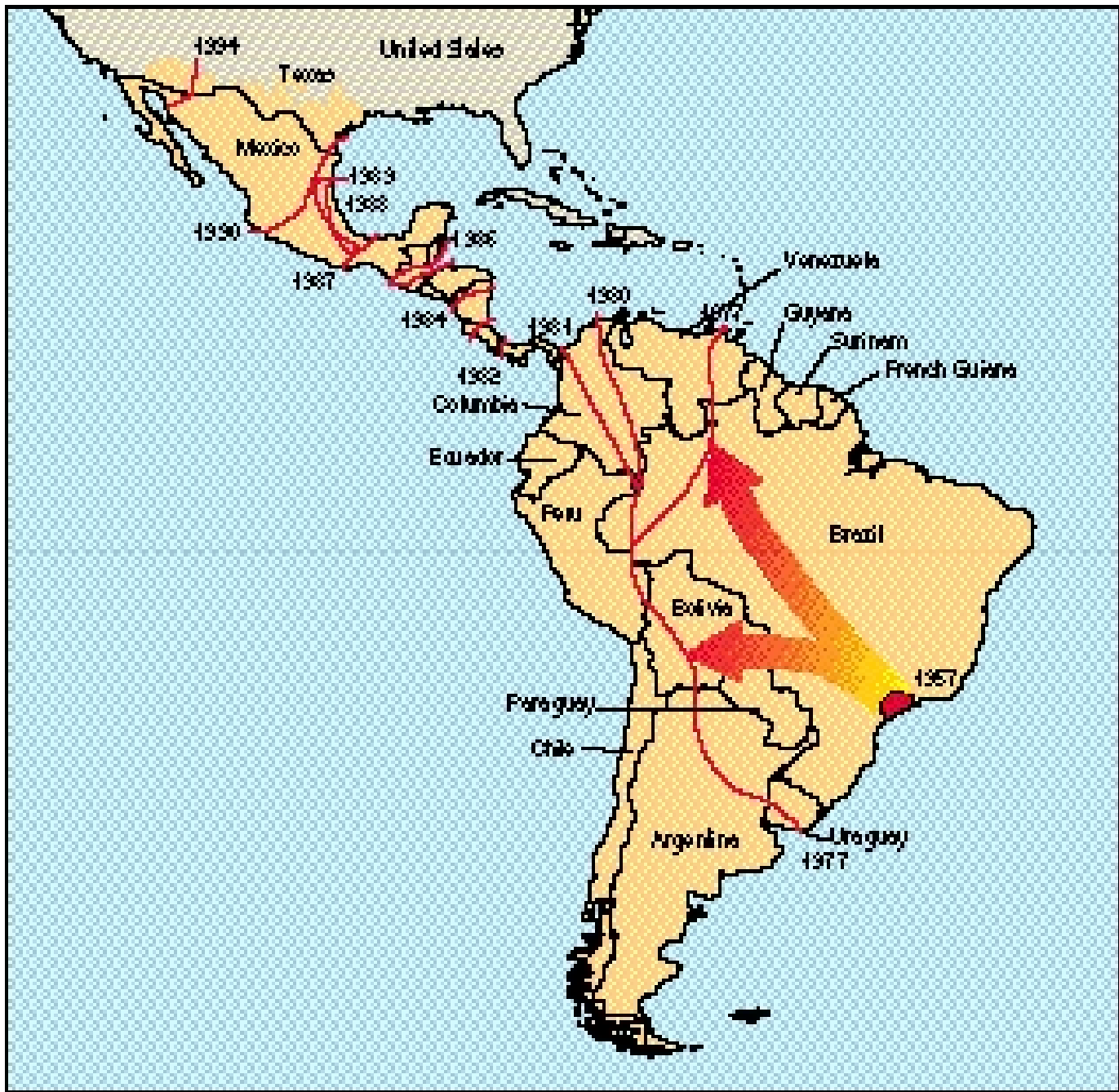
Keith S. Delaplane, Professor

University of Georgia

[www.ent.uga.edu/bees](http://www.ent.uga.edu/bees)





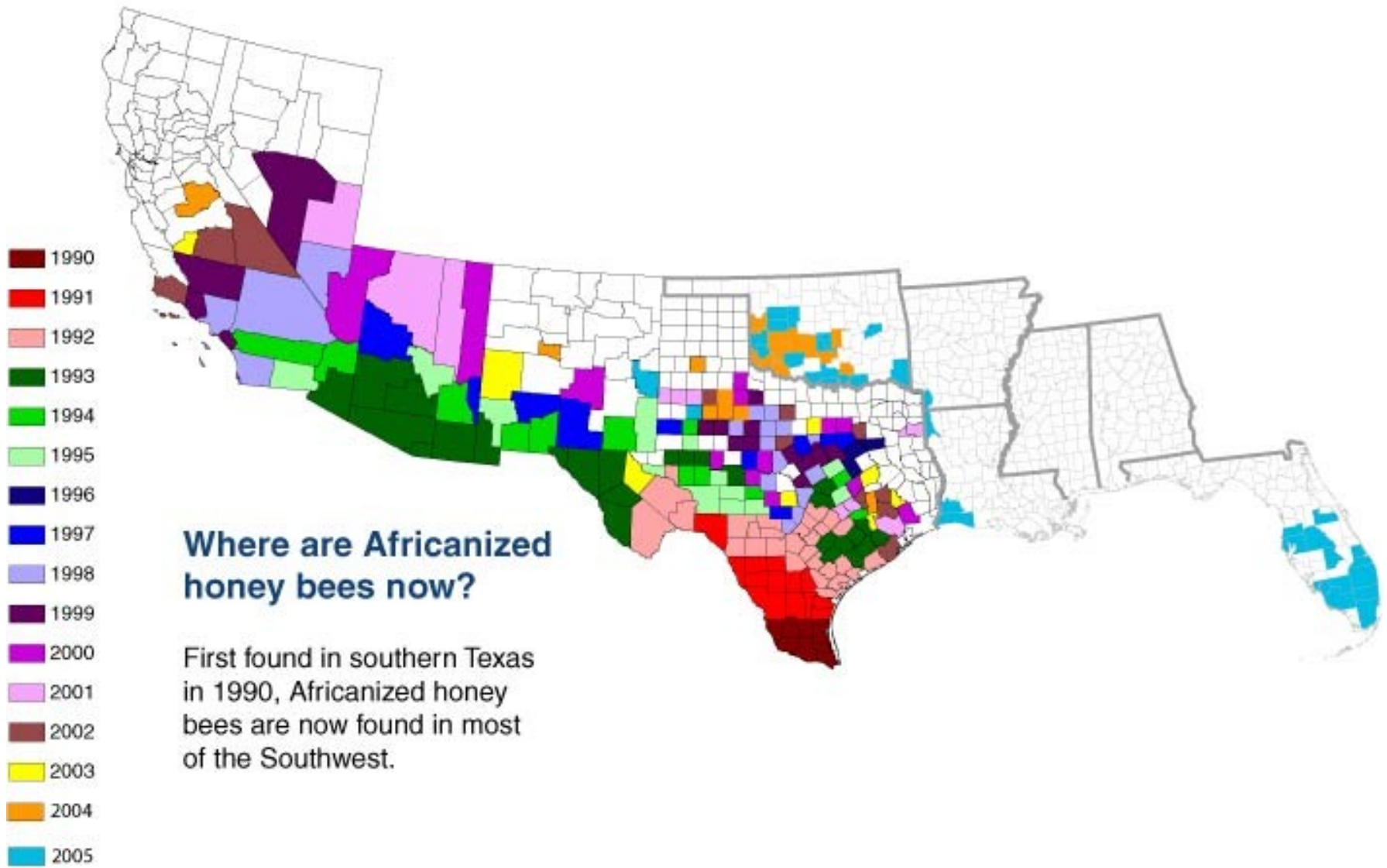




Southern-most limit of AHB overwintering in Argentina;



but they're already north of this latitude in North America.

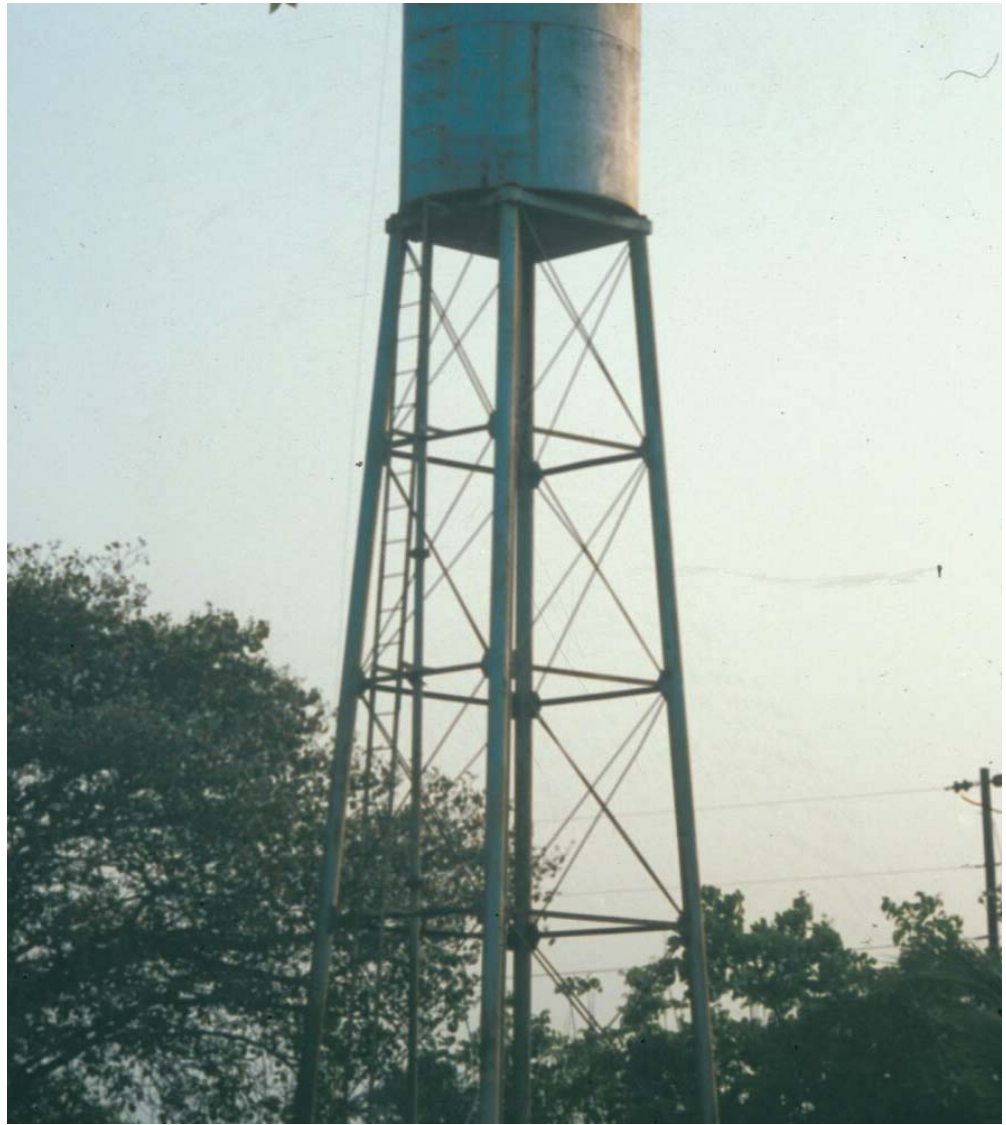








They nest in  
unusual  
places.











Their  
defensive  
response can  
range from  
explosive,



. . . to mild.









We anticipate increased incidence of wild bee colonies.



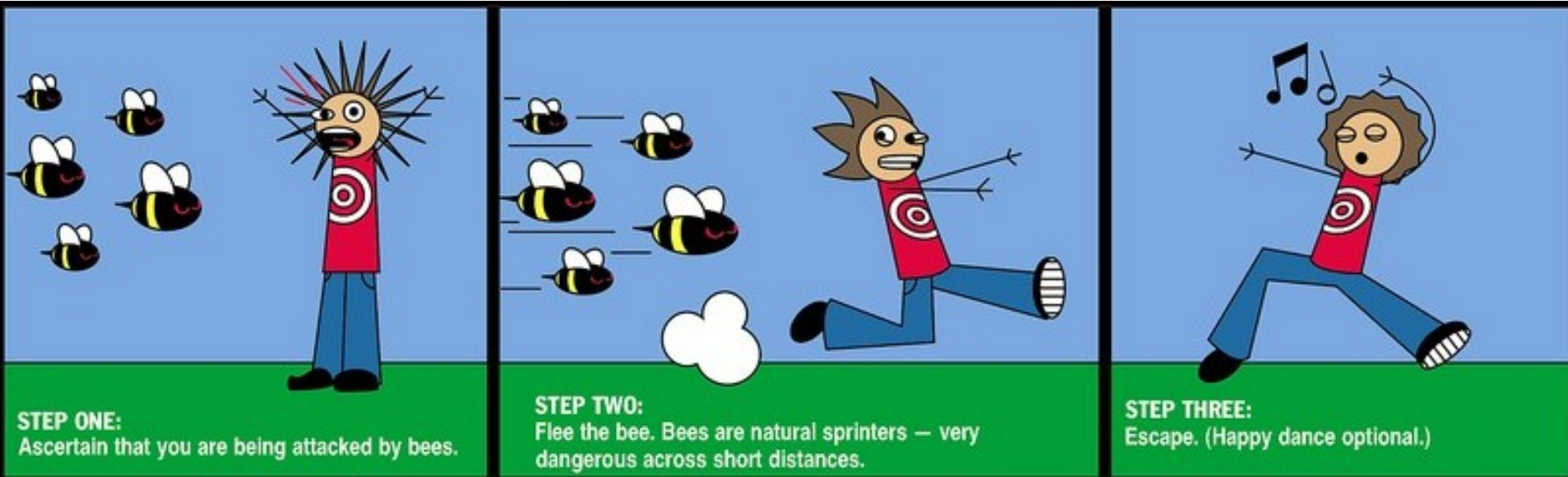
# Precautions for the public

# Precautions for the public

- Use caution as for fire ants.



# Run, don't stand and swat.

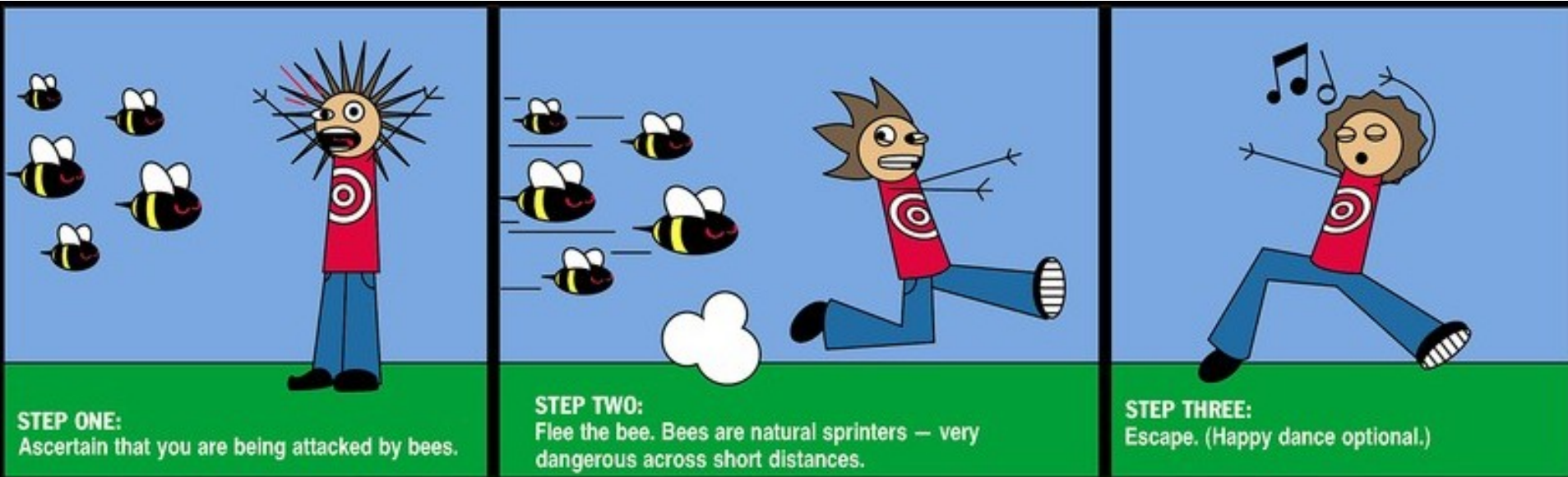


**STEP ONE:**  
Ascertain that you are being attacked by bees.

**STEP TWO:**  
Flee the bee. Bees are natural sprinters — very dangerous across short distances.

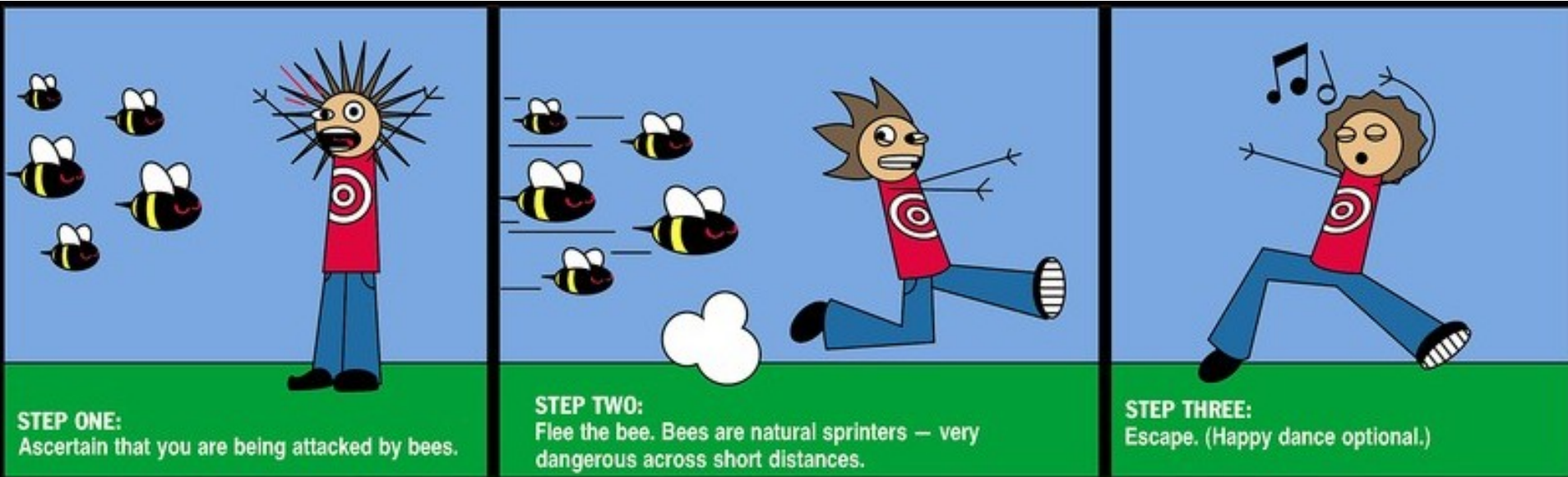
**STEP THREE:**  
Escape. (Happy dance optional.)

# Run, don't stand and swat.



Step one: Ascertain that you are being attacked by bees.

# Run, don't stand and swat.

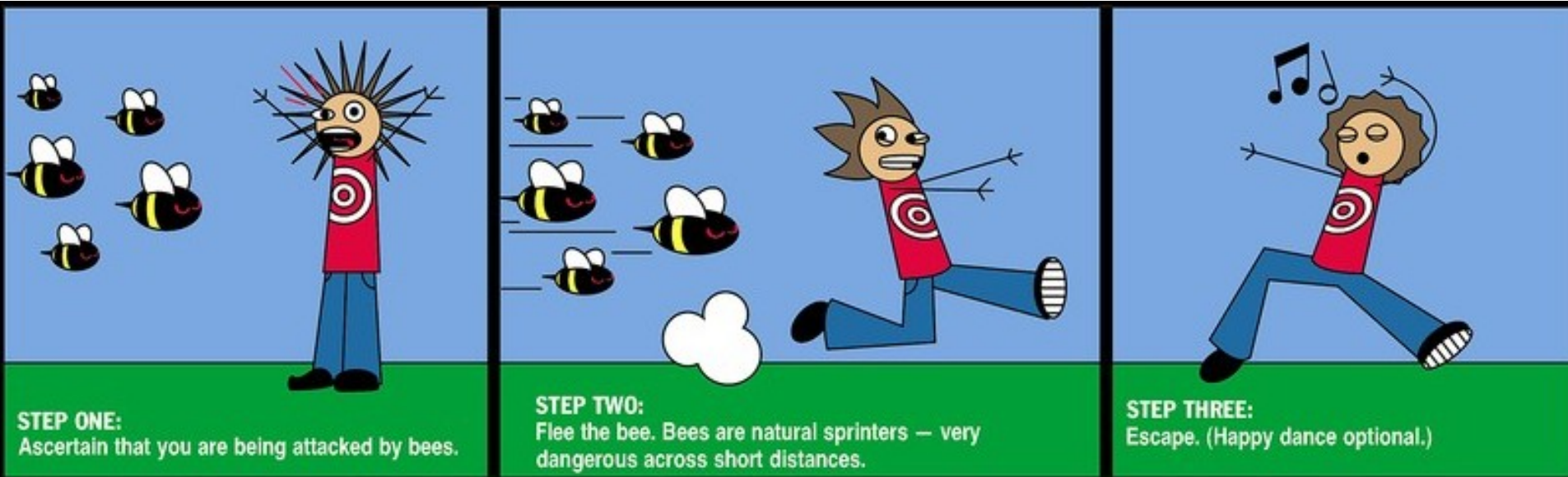


Step one: Ascertain that you are being attacked by bees.

Step two: Flee the bee. Bees are natural sprinters – very dangerous across short distances.



# Run, don't stand and swat.



Step one: Ascertain that you are being attacked by bees.

Step two: Flee the bee. Bees are natural sprinters – very dangerous across short distances.

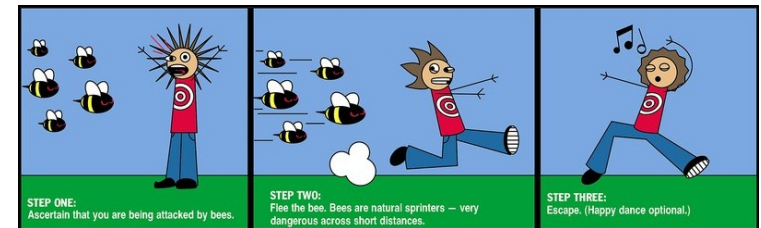
Step three: Escape. (Happy dance optional)

# Precautions for the public

- Use caution as for snakes or ants.



- Run, don't swat.

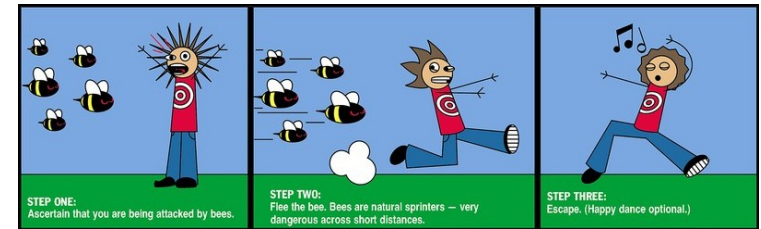


# Precautions for the public

- Use caution as for snakes or ants.



- Run, don't swat.



- Get inside; stay inside.

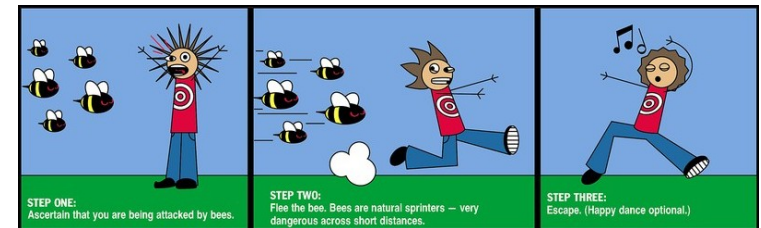


# Precautions for the public

- Use caution as for snakes or ants.



- Run, don't swat.



- Get inside; stay inside.



- Tractor operators take care.



# Considerations for emergency responders

# Considerations for emergency responders

- **Invest in bee suits.**



# Considerations for emergency responders

- **Invest in bee suits.**
- **Establish list of local beekeepers.**



# Considerations for emergency responders

- **Invest in bee suits.**
- **Establish list of local beekeepers.**
- **Establish perimeter.**





# Considerations for emergency responders

- **Invest in bee suits.**
- **Establish list of local beekeepers.**
- **Establish perimeter.**
- **Situate medical response team.**



# Considerations for emergency responders

- **Invest in bee suits.**
- **Establish list of local beekeepers.**
- **Establish perimeter.**
- **Situate medical response team.**
- **Suit-up before you leave truck.**



# Considerations for emergency responders

- **Invest in bee suits.**
- **Establish list of local beekeepers.**
- **Establish perimeter.**
- **Situate medical response team.**
- **Suit-up before you leave truck.**
- **Subdue bees.**

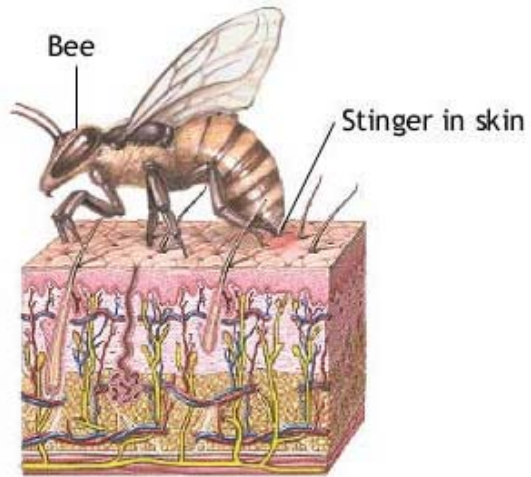


# Considerations for emergency responders

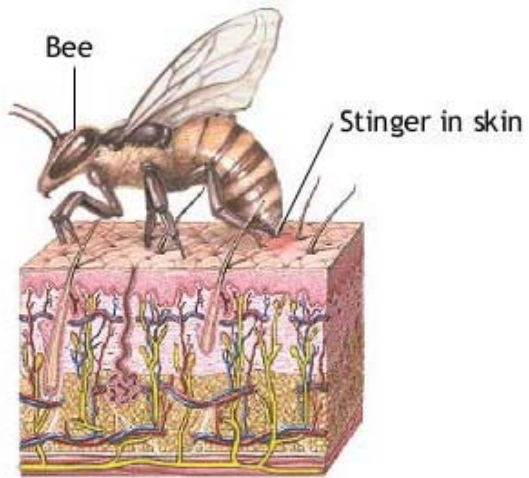
- **Invest in bee suits.**
- **Establish list of local beekeepers.**
- **Establish perimeter.**
- **Situate medical response team.**
- **Suit-up before you leave truck.**
- **Subdue bees.**
- **Remove victim.**



# A little toxicology

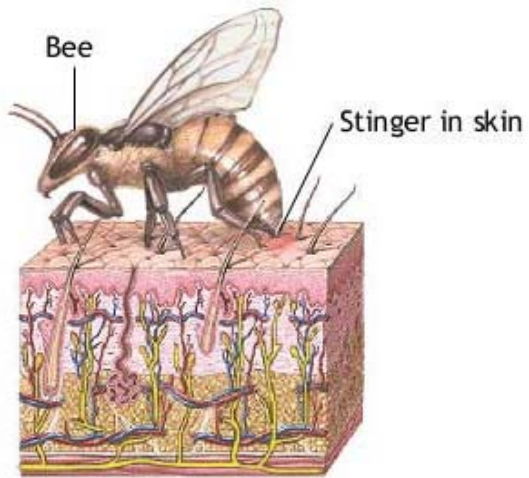


# A little toxicology



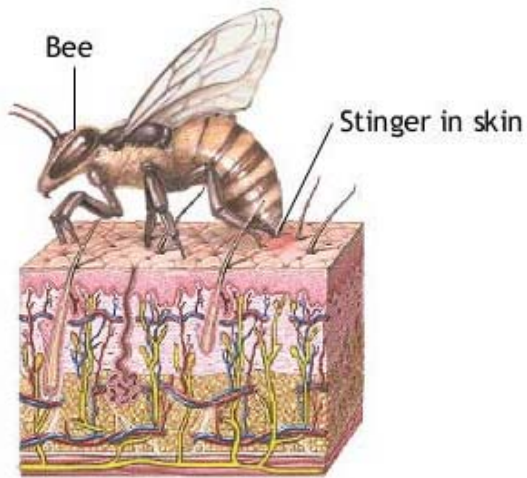
- Local pain, redness, swelling =

# A little toxicology



- Local pain, redness, swelling = **NORMAL**

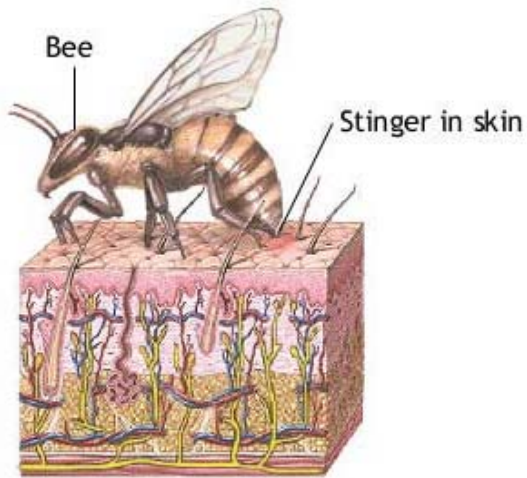
# A little toxicology



- Local pain, redness, swelling = **NORMAL**
- 15-25 stings =

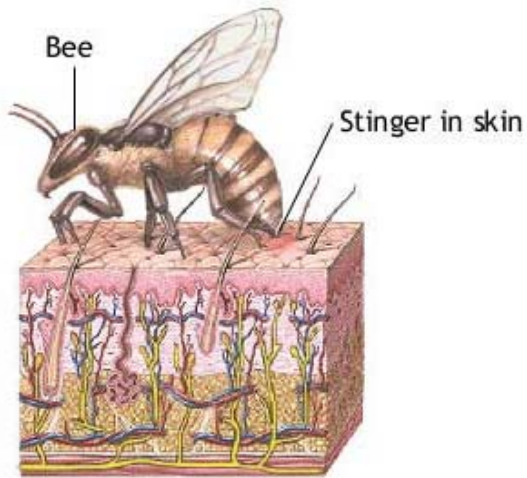


# A little toxicology



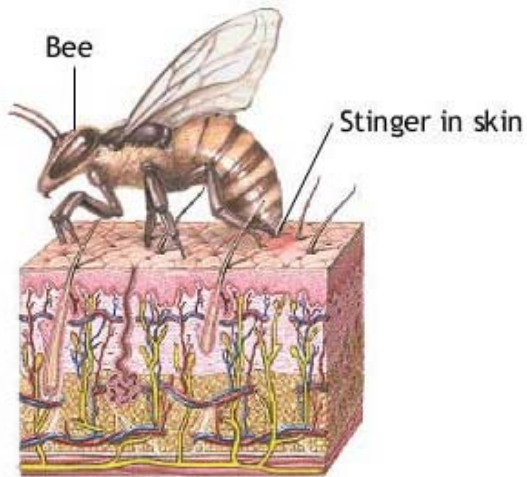
- Local pain, redness, swelling = **NORMAL**
- 15-25 stings = **SEE PHYSICIAN**

# A little toxicology



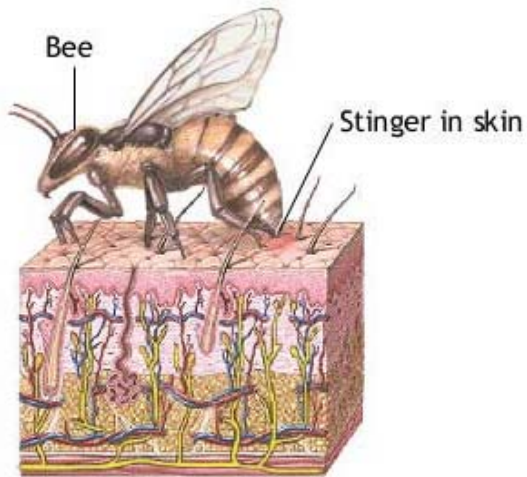
- Local pain, redness, swelling = **NORMAL**
- 15-25 stings = **SEE PHYSICIAN**
- 1000 stings =

# A little toxicology



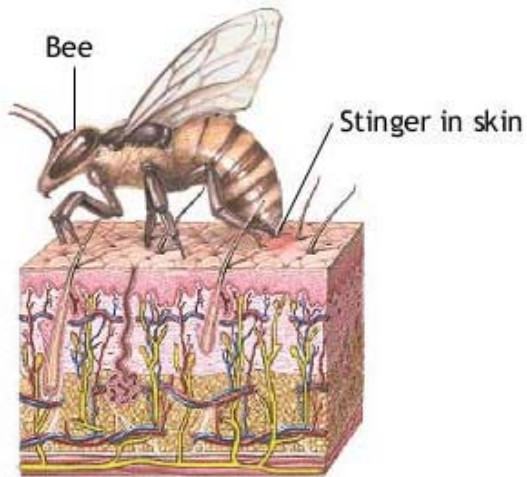
- Local pain, redness, swelling = **NORMAL**
- 15-25 stings = **SEE PHYSICIAN**
- 1000 stings = **HUMAN LD<sub>50</sub>**

# A little toxicology



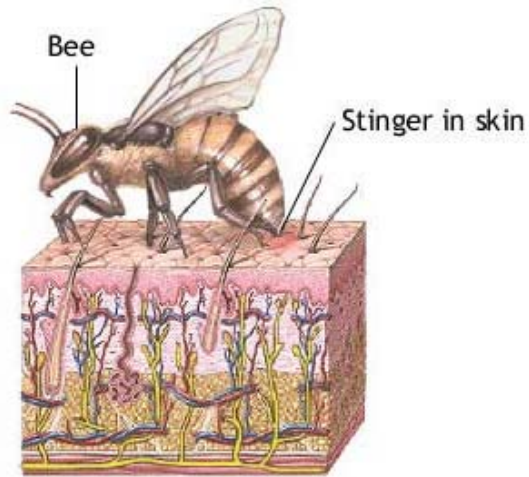
- Local pain, redness, swelling = **NORMAL**
- 15-25 stings = **SEE PHYSICIAN**
- 1000 stings = **HUMAN LD<sub>50</sub>**
- Faint, shortness of breath =

# A little toxicology



- Local pain, redness, swelling = **NORMAL**
- 15-25 stings = **SEE PHYSICIAN**
- 1000 stings = **HUMAN LD<sub>50</sub>**
- Faint, shortness of breath = **SYSTEMIC ALLERGY**

# A little toxicology



- Local pain, redness, swelling = **NORMAL**
- 15-25 stings = **SEE PHYSICIAN**
- 1000 stings = **HUMAN LD<sub>50</sub>**
- Faint, shortness of breath = **SYSTEMIC ALLERGY**