

# Blood Meal Analysis of South Georgia Mosquitoes

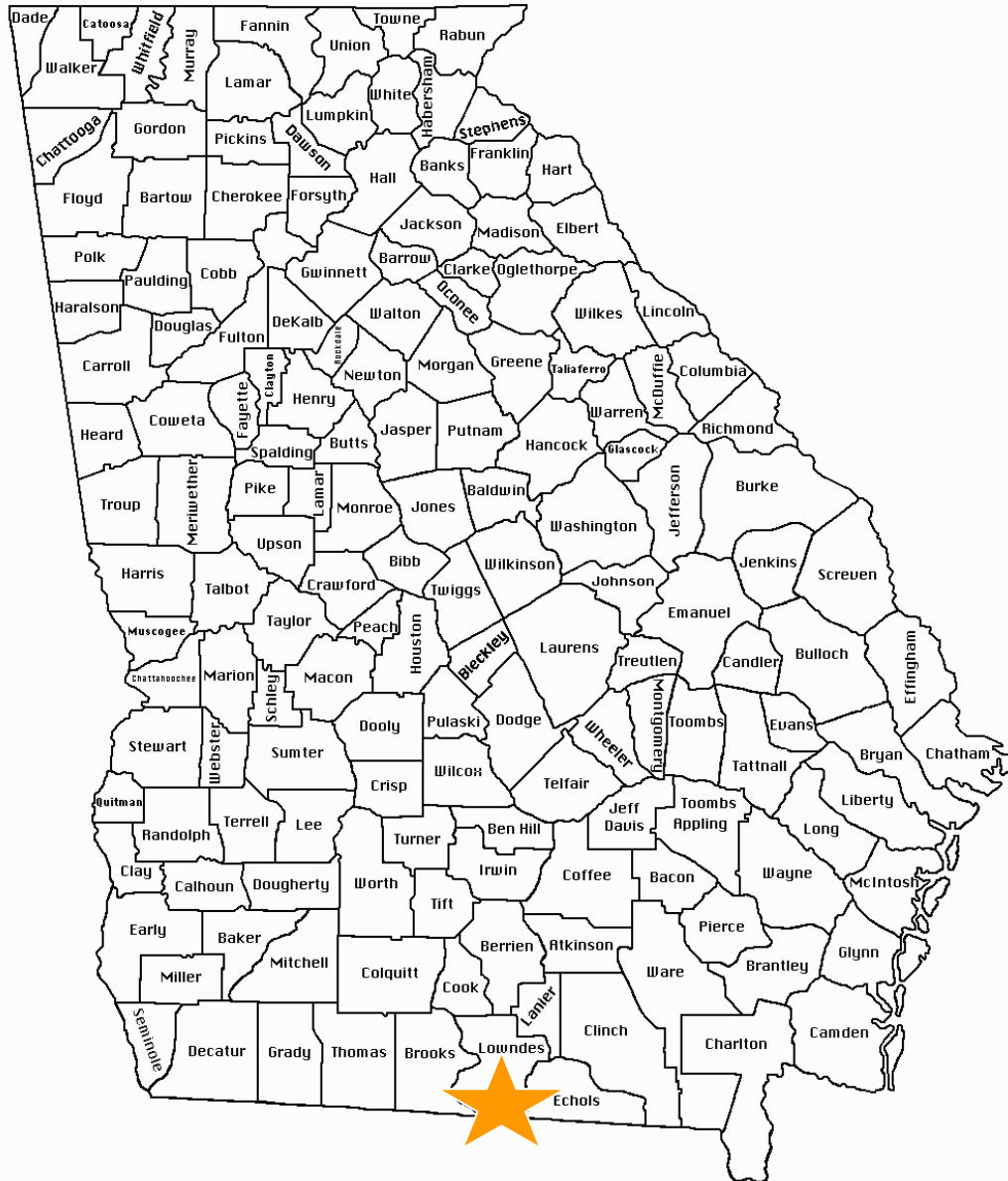
Tanya Carter  
Biology Department  
Valdosta State University

# In Search of.....

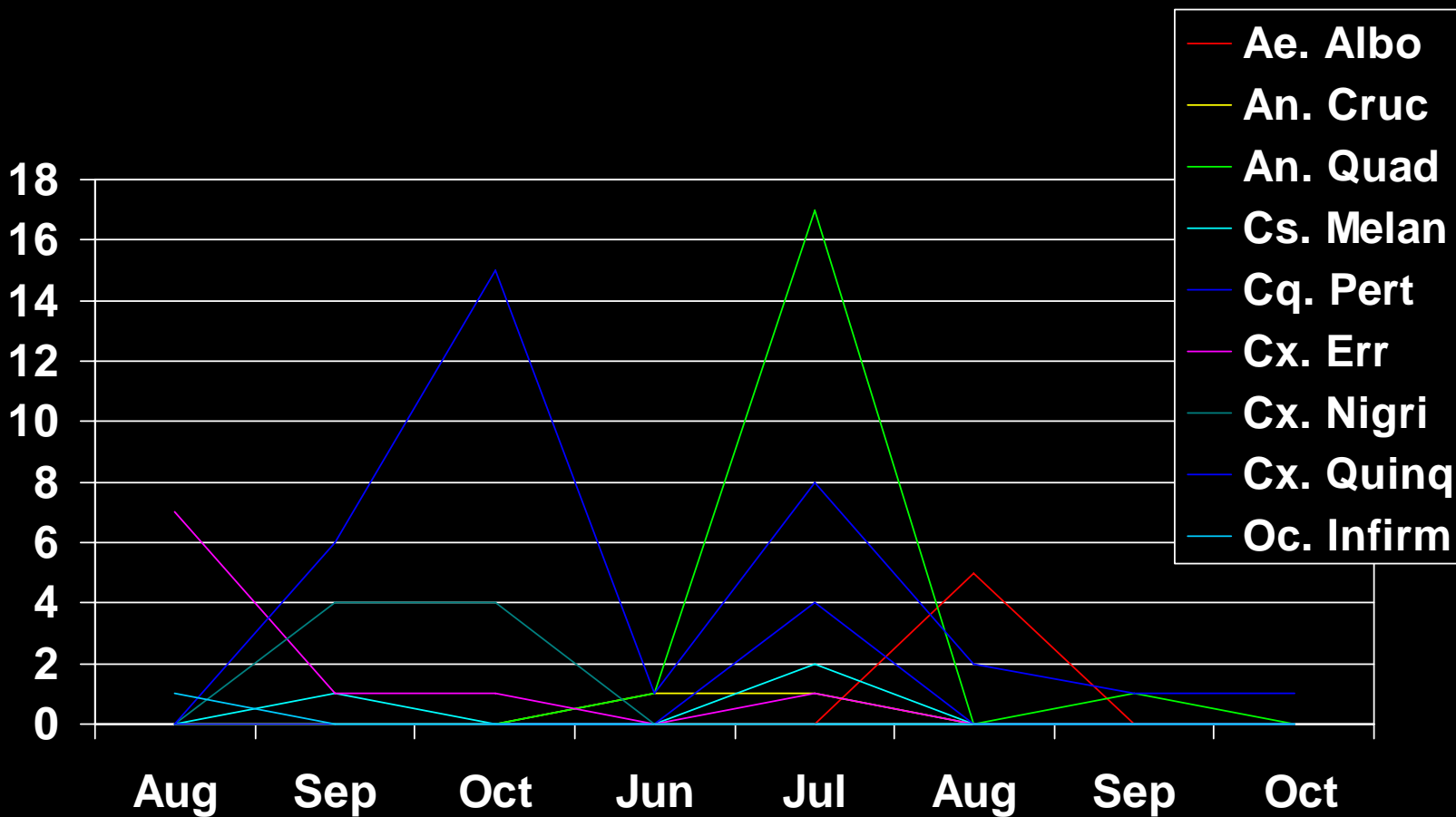


# Species Collected

- *Aedes albopictus*
- *Anopheles crucians*
- *Anopheles quadrimaculatus*
- *Coquillettidia perturbans*
- *Culex nigripalpus*
- *Culex erraticus*
- *Culex quinquefasciatus*
- *Culiseta melanura*
- *Ochlerotatus infirmatus*
- *Psorophora columbiae*

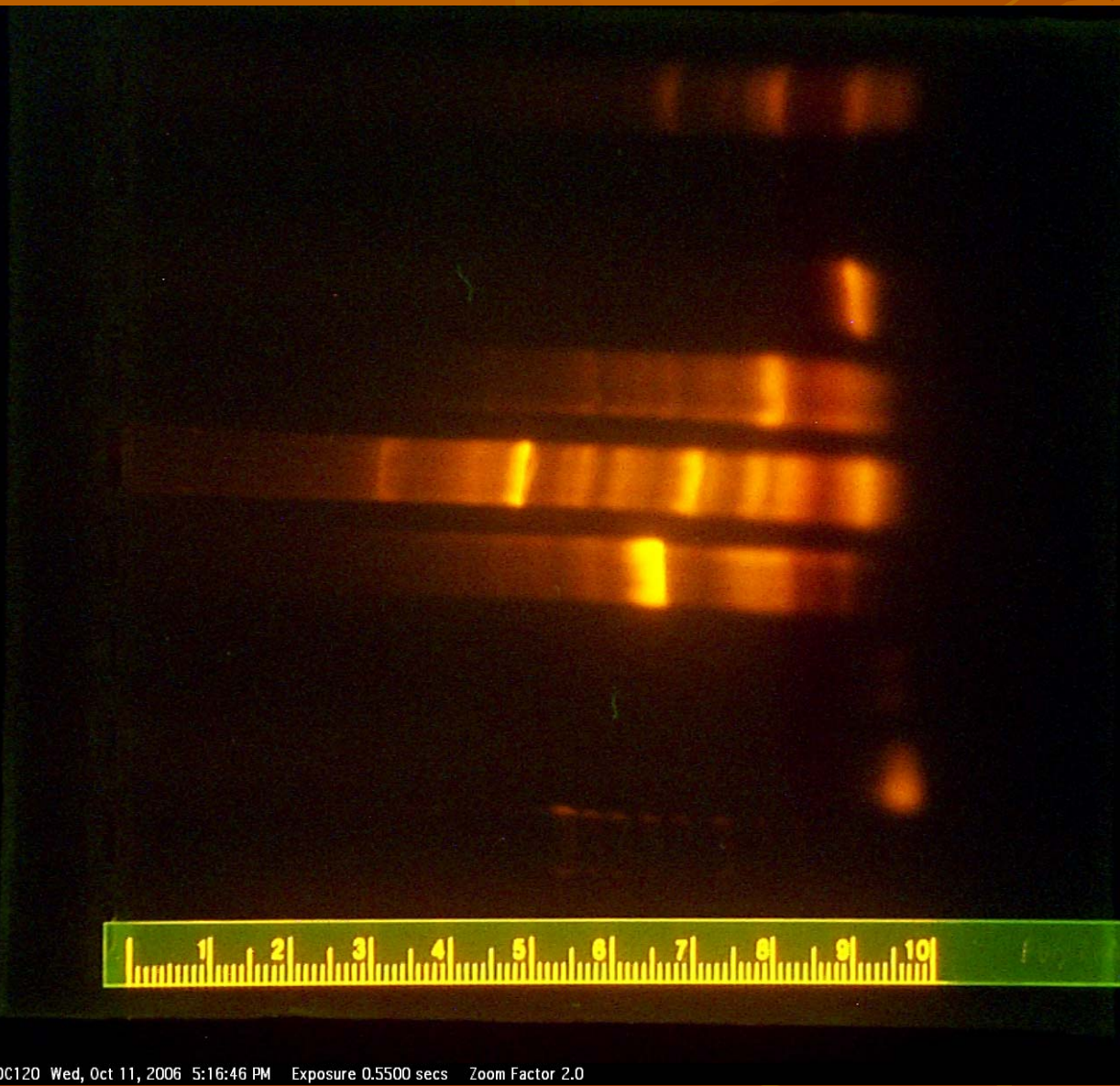


# Collected Species



# DNA Methods

- DNA extraction
- Polymerase Chain Reaction (PCR)  
amplification of isolated DNA using species  
specific primers
- Electrophoresis of PCR products



Mosquito

Primer Multiplex

Goat Sample

Human Sample

Pig Sample

Cow Sample

Dog Sample

Negative Control

DNA Ladder

# Molecular Aims

## Avian samples

Passerine

Galliformes

Falconiformes

## Vertebrate samples

Dog

Pig

Goat

Cow

Horse

Cat

Human

Bobcat

Opossum

Armadillo

Snake

Anole

Alligator

Deer



# Acknowledgments

Dr. Mark Blackmore, VSU Dept. of Biology

Dr. John Elder, VSU Dept. of Biology

Resting boxes built by Alan Carter and Dick Dixon

Vertebrate samples courtesy of Dr. Mitch Lockhart, VSU Dept.  
of Biology