

AFTER THE FIRE



April to June, 2007: Ware County Fire

Firefighters used bulldozers to widen fire breaks that were protecting the small community of Manor from a wildfire that had blackened more than 86 square miles of forest in southeast Georgia in one week.

The fire was started April 16 by a fallen power line that ignited tinder-dry trees near the sprawling Okefenokee National Wildlife Refuge. It eventually burned >600,00 acres in Georgia and Florida.









2007/04/21





A fire break 12 miles or 20 kilometers long was bulldozed through the pine forest to protect the city of Waycross, but there were breaches of the line. The [governor of Georgia](#) made a [disaster declaration](#), making Ware and Brantley counties eligible for government aid.





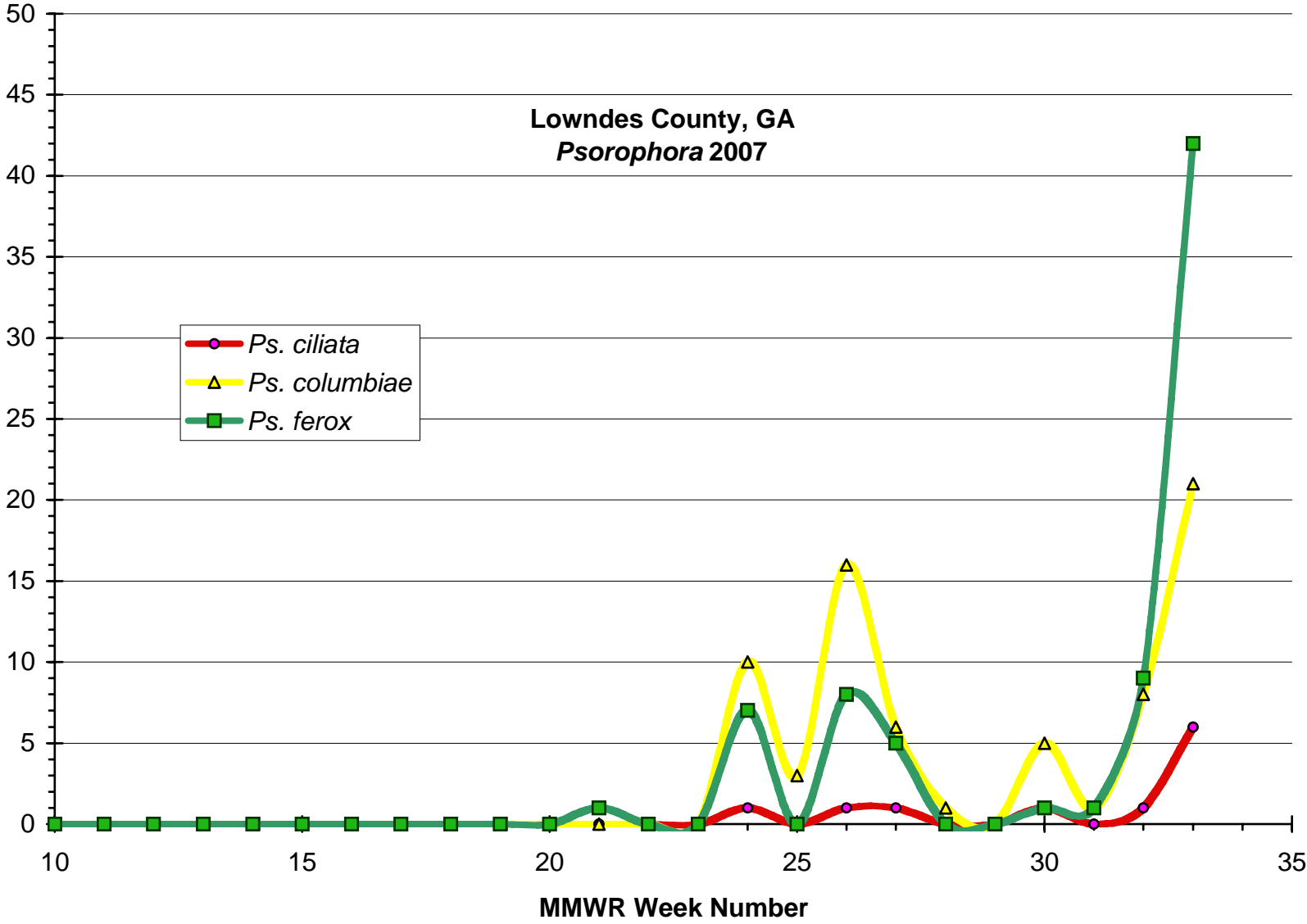




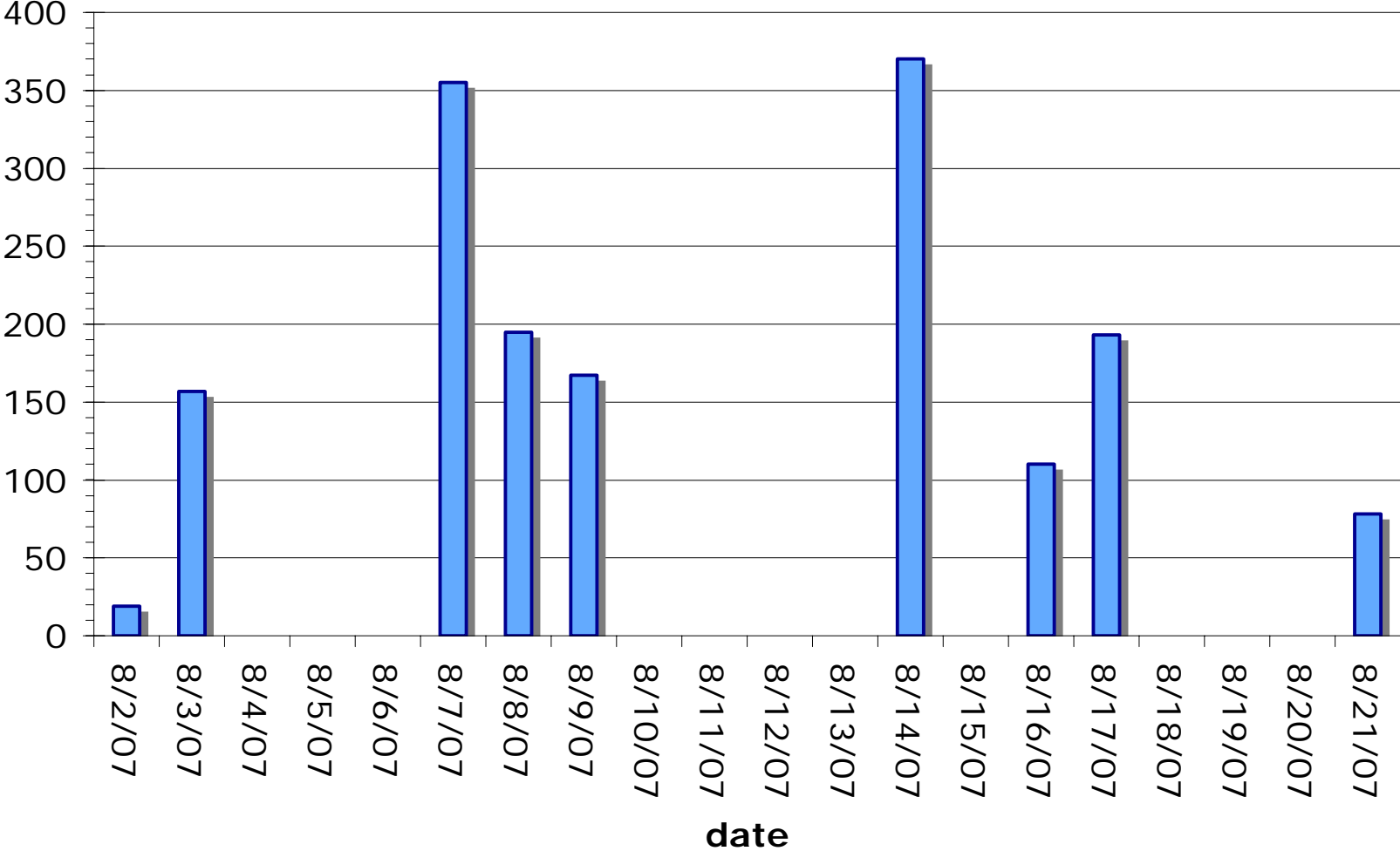
By June 22, the wildfires in Georgia were largely contained. The containment came after beneficial, heavy rain blanketed the region from [Tropical Storm Barry \(2007\)](#) in [June 2007](#).



Lowndes County, GA
Psorophora 2007



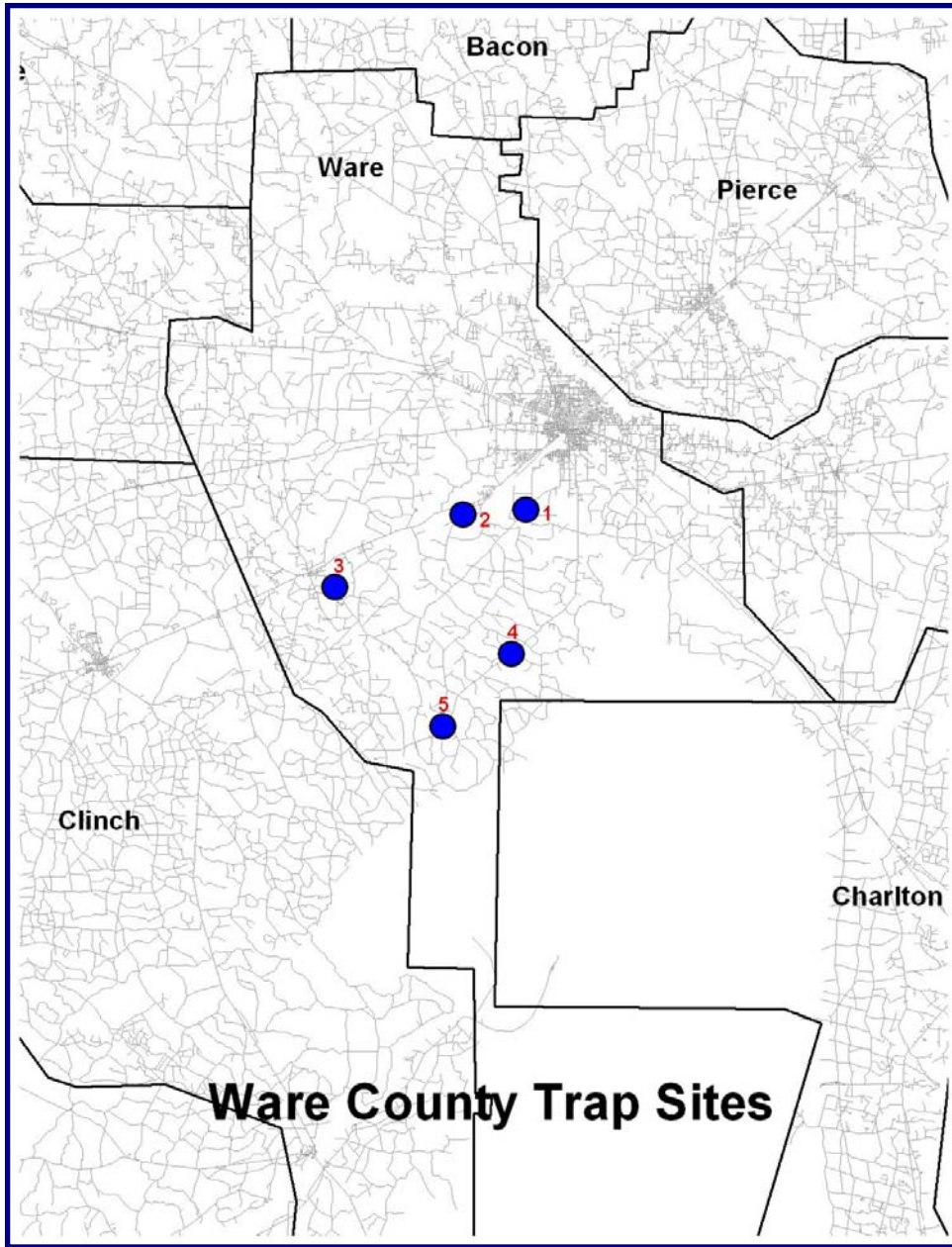
Brunswick County





Emergency Mosquito Surveillance





Trap 1 N 31° 09.036'
W 82° 23.515'

Trap2 N 31° 08.819'
W 82° 26.698'

Trap 3 N 31° 05.580'
W 82° 33.072'

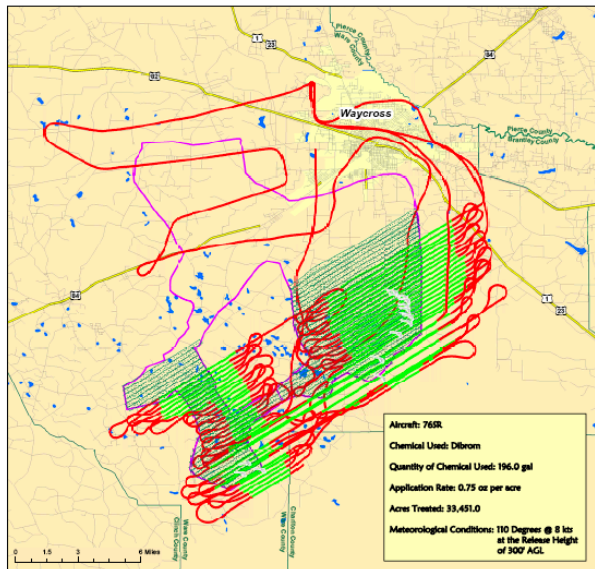
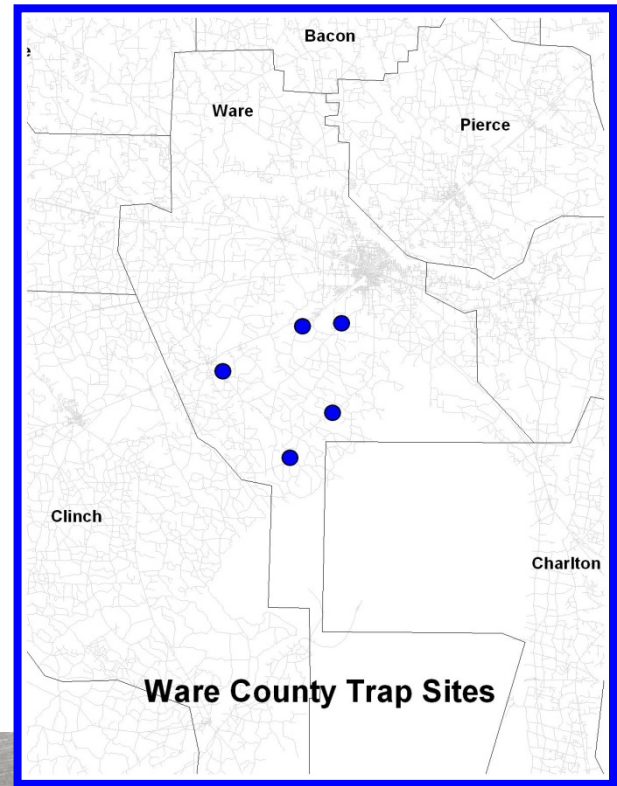
Trap 4 N 31° 02.815'
W 82° 24.163'

Trap 5 N 30° 59.638'
W 82° 27.584'



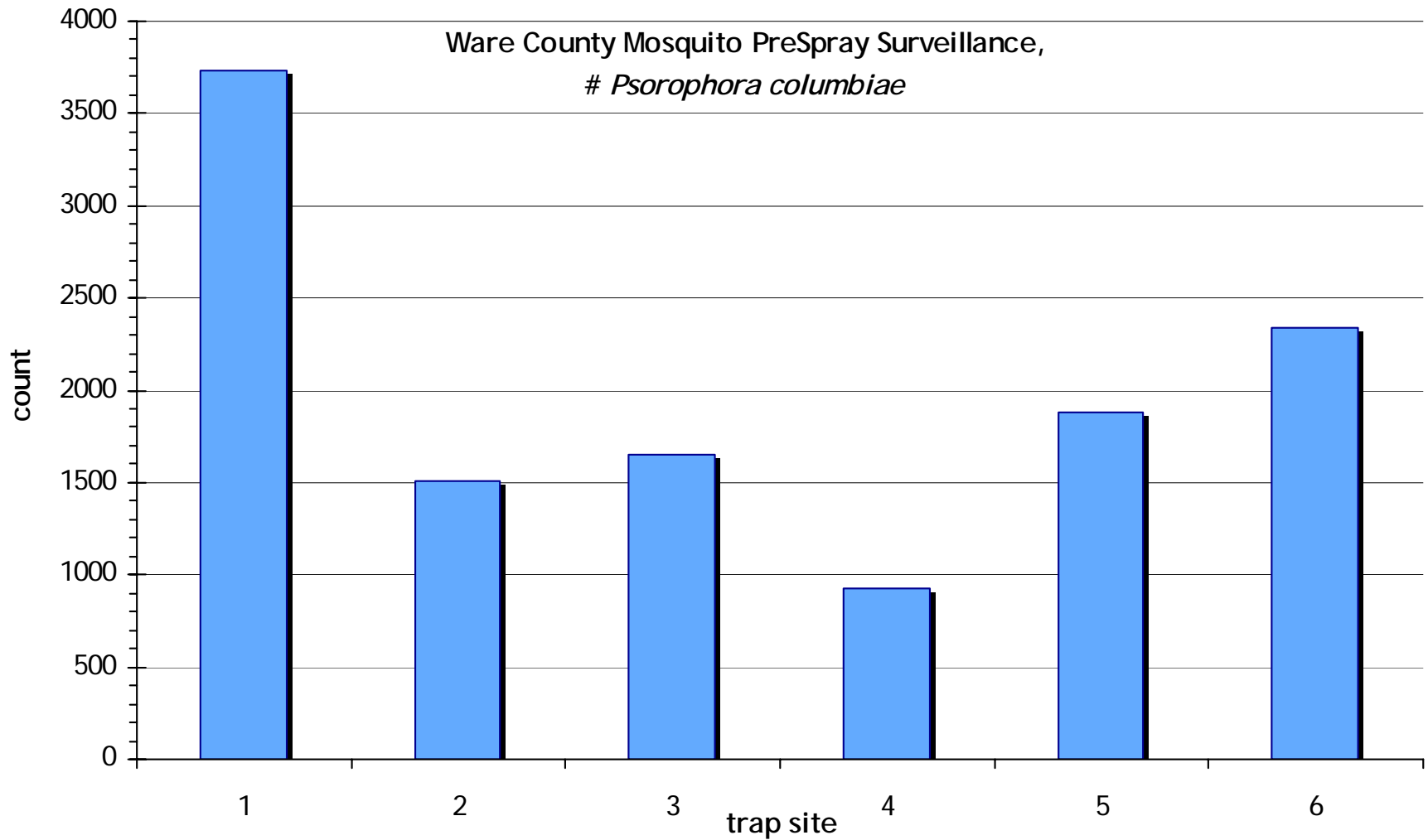


Data collected using equipment from the trailer allowed good mosquito control decisions to be made in a timely manner.



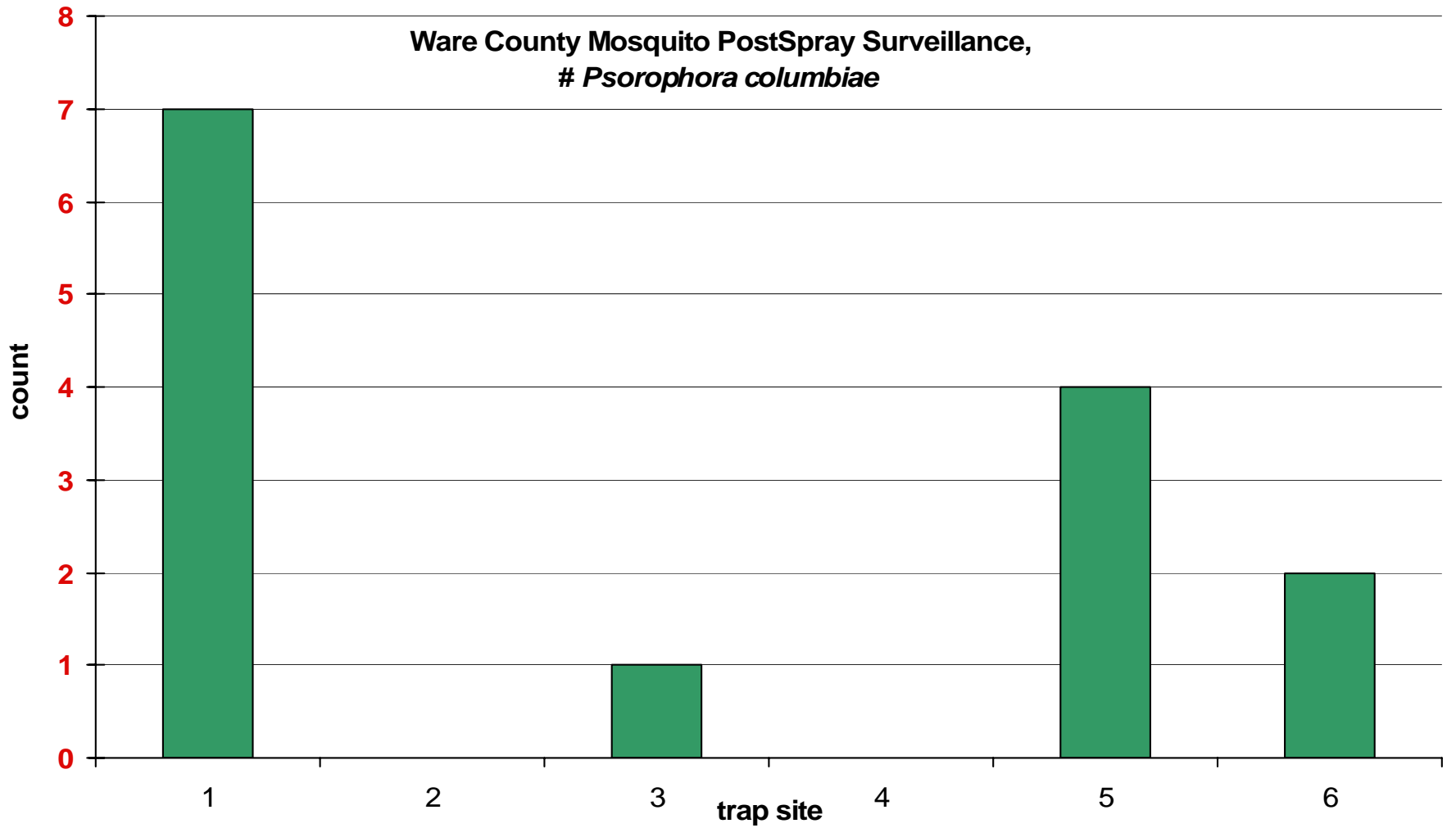


Ware County Mosquito PreSpray Surveillance,
Psorophora columbiae





Ware County Mosquito PostSpray Surveillance,
Psorophora columbiae



Ware County Surveillance

