

ADULT MOSQUITO ECOLOGY IN SOUTHWEST GEORGIA

Eva Whitehead¹, Steve Golladay², Alan Covich¹, Daniel Mead³, and Mark Blackmore⁴

¹Odum School of Ecology, University of Georgia, Athens, GA

²J.W. Jones Ecological Research Center, Newton, GA

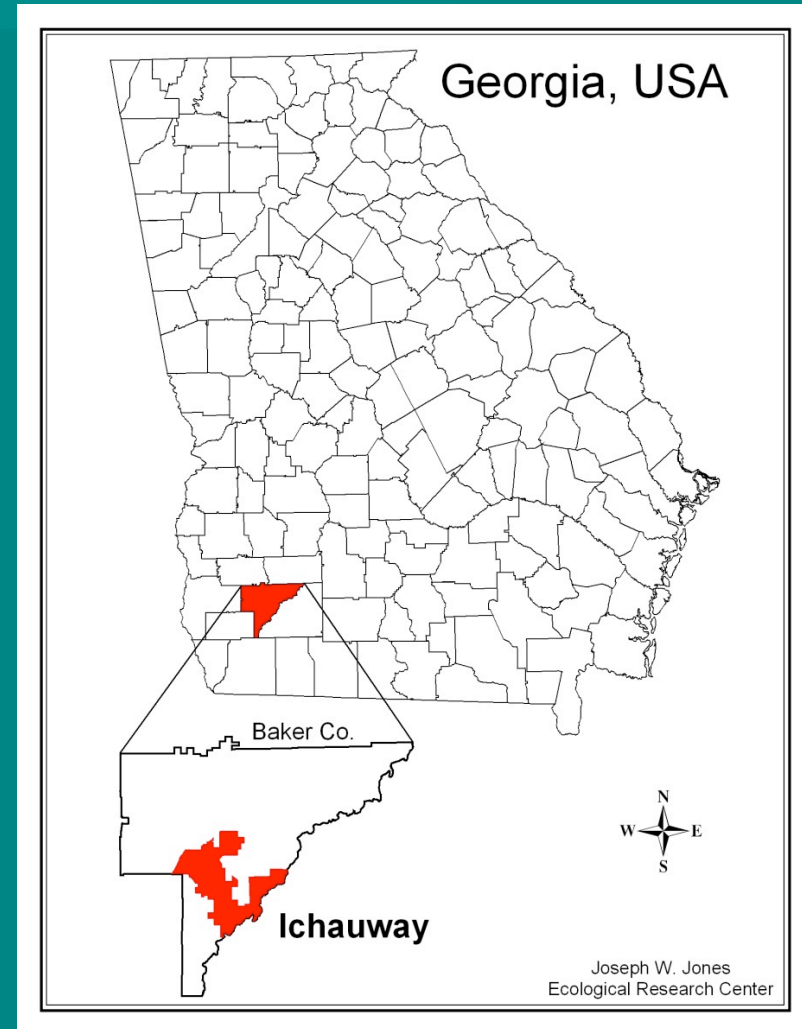
³Southeastern Cooperative Wildlife Disease Study, Athens, GA

⁴Department of Biology, Valdosta State University, Valdosta, GA



What is Ichauway?

- Coca-Cola
- 29,000 acres
- Longleaf pine and wiregrass
- Maintained by fire



Project Rationale

- Return to the roots
 - Emory University Field Station at Ichauway





Other mosquitoes are collected from speci-
constructed resting places near breeding areas.



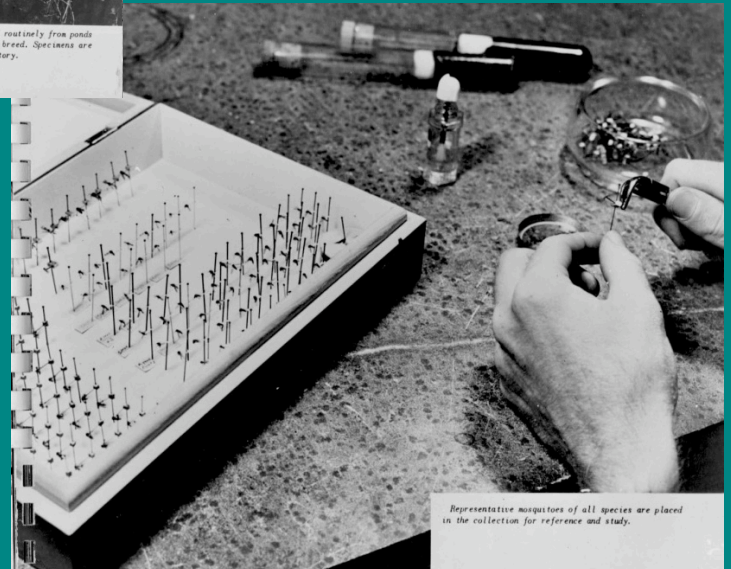
Adult mosquitoes are collected from houses, barns,
and outbuildings.



Mosquito larvae are collected routinely from ponds
and other places in which they breed. Specimens are
later identified in the laboratory.



Mosquitoes used in transmission studies are reared
and stored under carefully controlled conditions in
the insectary.



Representative mosquitoes of all species are placed
in the collection for reference and study.

Project Rationale

- Originally comparison of urban vs. rural
- Focus on adults
- 'Dilution effect' theory



www.albanytomorrow.com



www.jonesctr.org

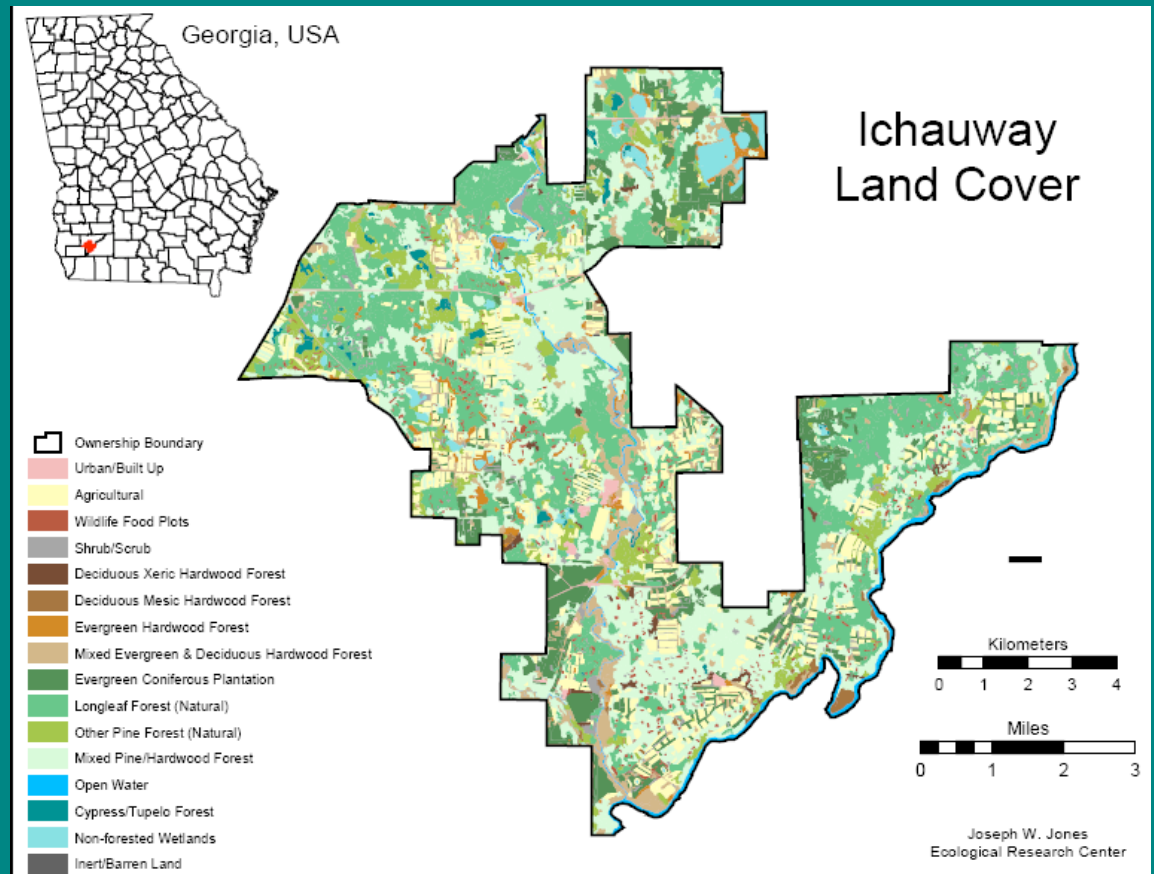
Project Objectives

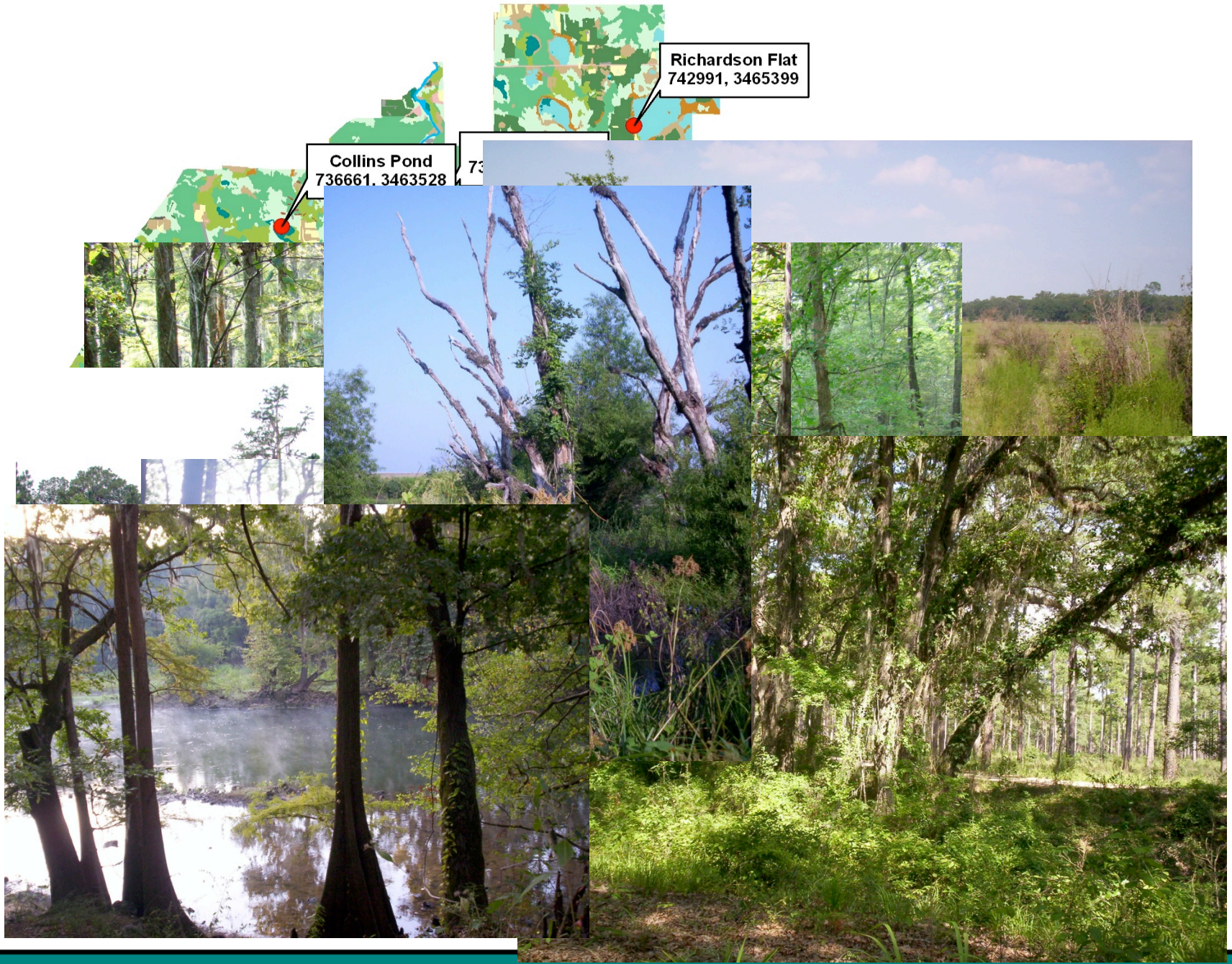
- Gain data on:
 - Mosquito community composition
 - Prevalence of arboviruses
 - Host-feeding patterns of mosquitoes

Methods

■ Study sites

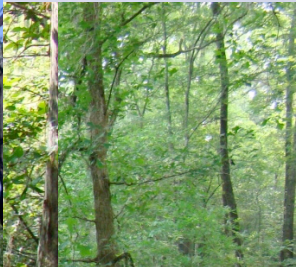
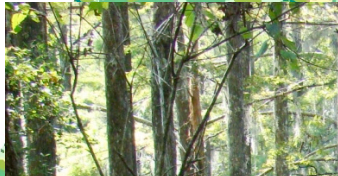
– 8 sites selected from Ichauway





Richardson Flat
742991, 3465399

Collins Pond
736661, 3463528



Field Methods

- Environmental factors measured:
 - Temperature
 - Relative Humidity
 - Rainfall
 - Canopy Cover



www.rickly.com



www.onsetcomp.com



Field Methods continued

- Mosquito collection:
 - Once a week
 - CO₂-baited CDC miniature light trap
 - CDC gravid trap



Obtaining blooded females



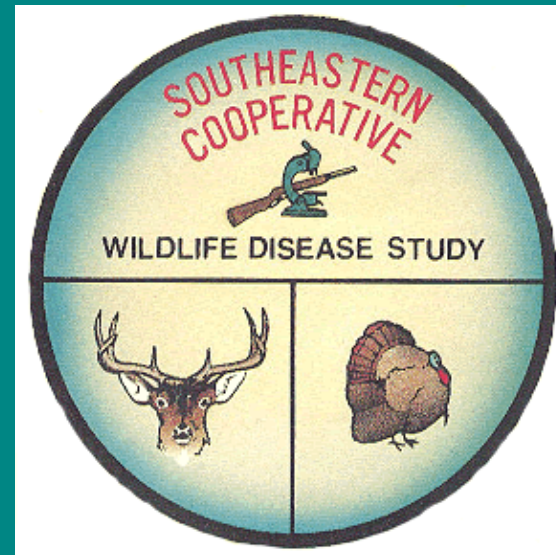
Laboratory Methods

- Mosquitoes separated and ID'd to species
- Species, sex and number of mosquitoes
- Mosquitoes in pools stored at -80°C



Laboratory Methods continued

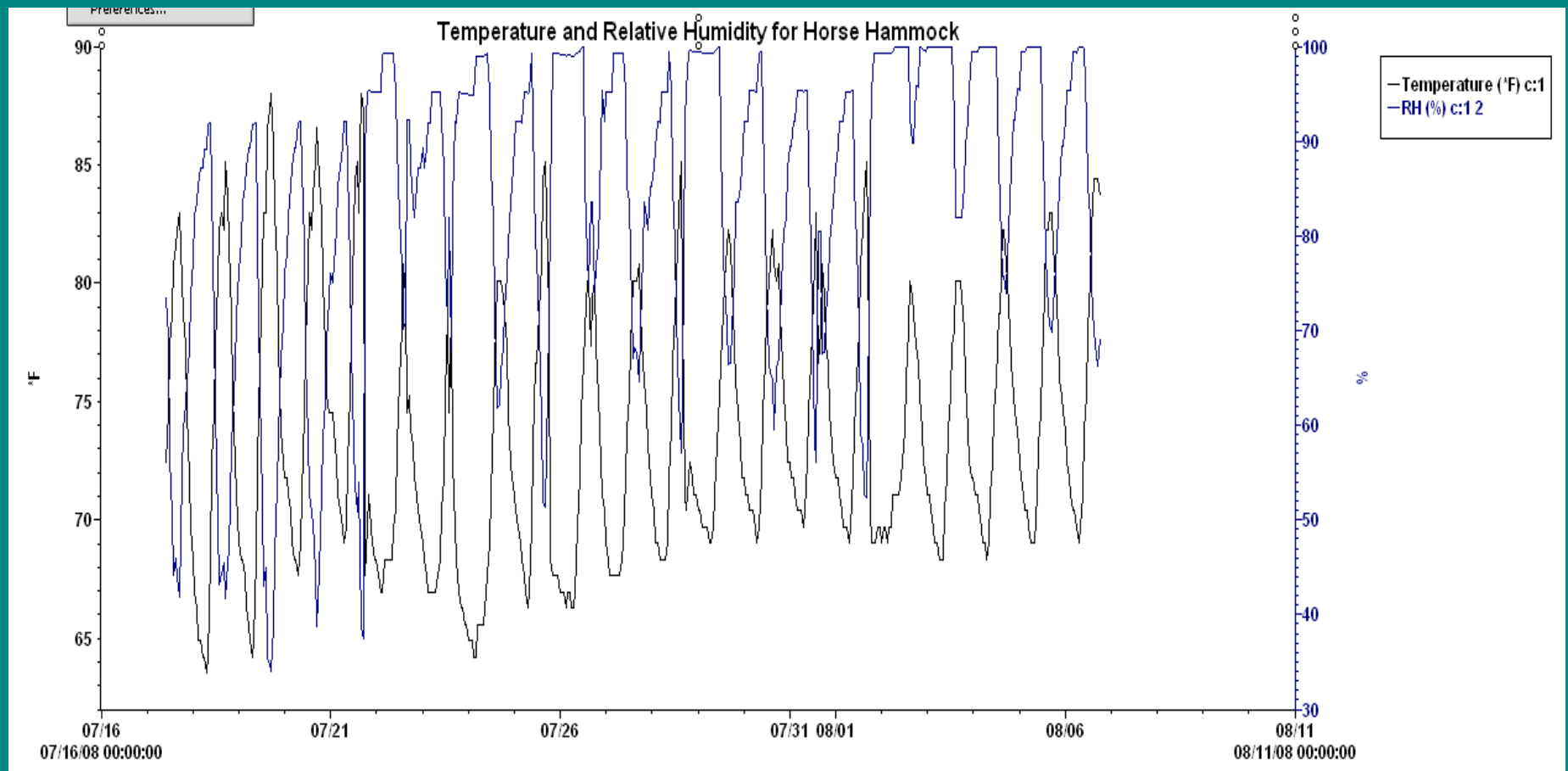
- Mosquito pools will be tested for arboviruses
- Source of blood meal will be identified



Preliminary Results

Preliminary results

■ Environmental data recorded:



Preliminary Results

■ 30 Mosquito Species Collected:

Ae. albopictus

Ae. vexans

An. crucians

An. punctipennis

An. quadrimaculatus

Cq. perturbans

Cs. melanura

Cx. coronator

Cx. erraticus

Cx. nigripalpus

Cx. quinquefasciatus

Cx. restuans

Cx. salinarius

Cx. territans

Oc. atlanticus

Oc. canadensis

Oc. fulvus pallens

Oc. infirmatus

Oc. mitchellae

Oc. sticticus

Oc. thibaulti

Oc. triseriatus

Or. signifera

Ps. ciliata

Ps. columbiae

Ps. cyanescens

Ps. ferox

Ps. howardii

Ps. mathesoni

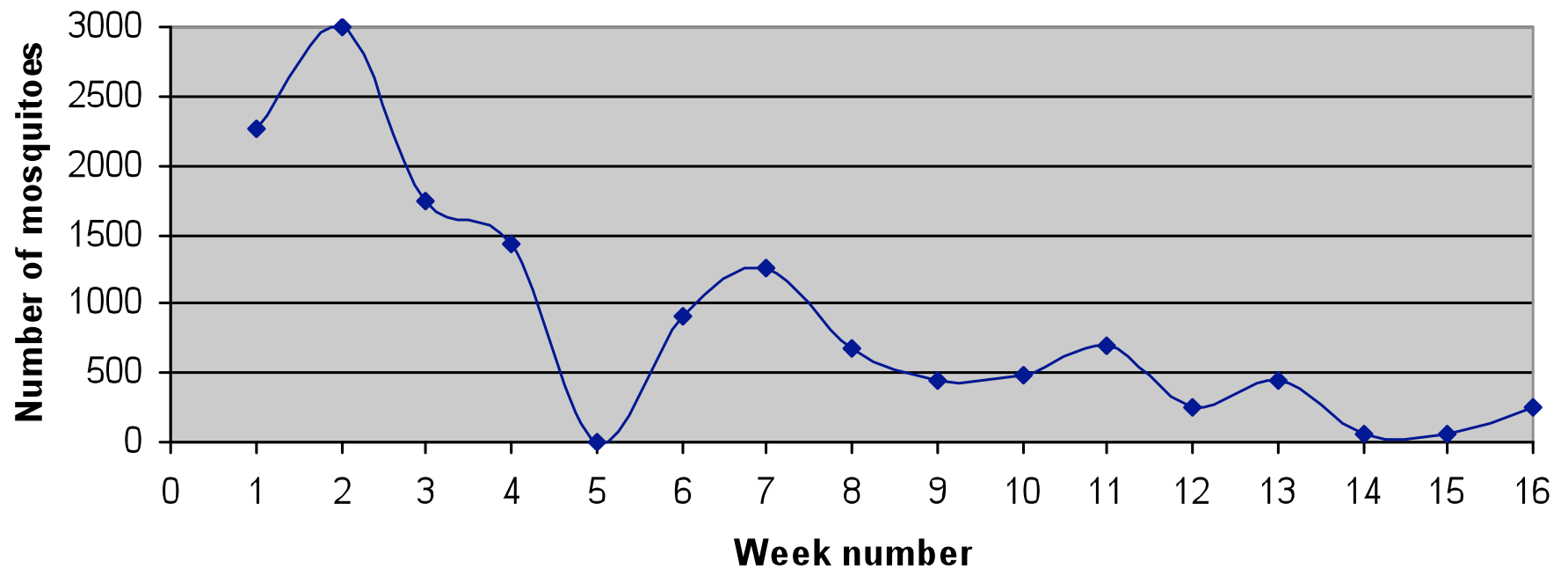
Ur. sapphirina



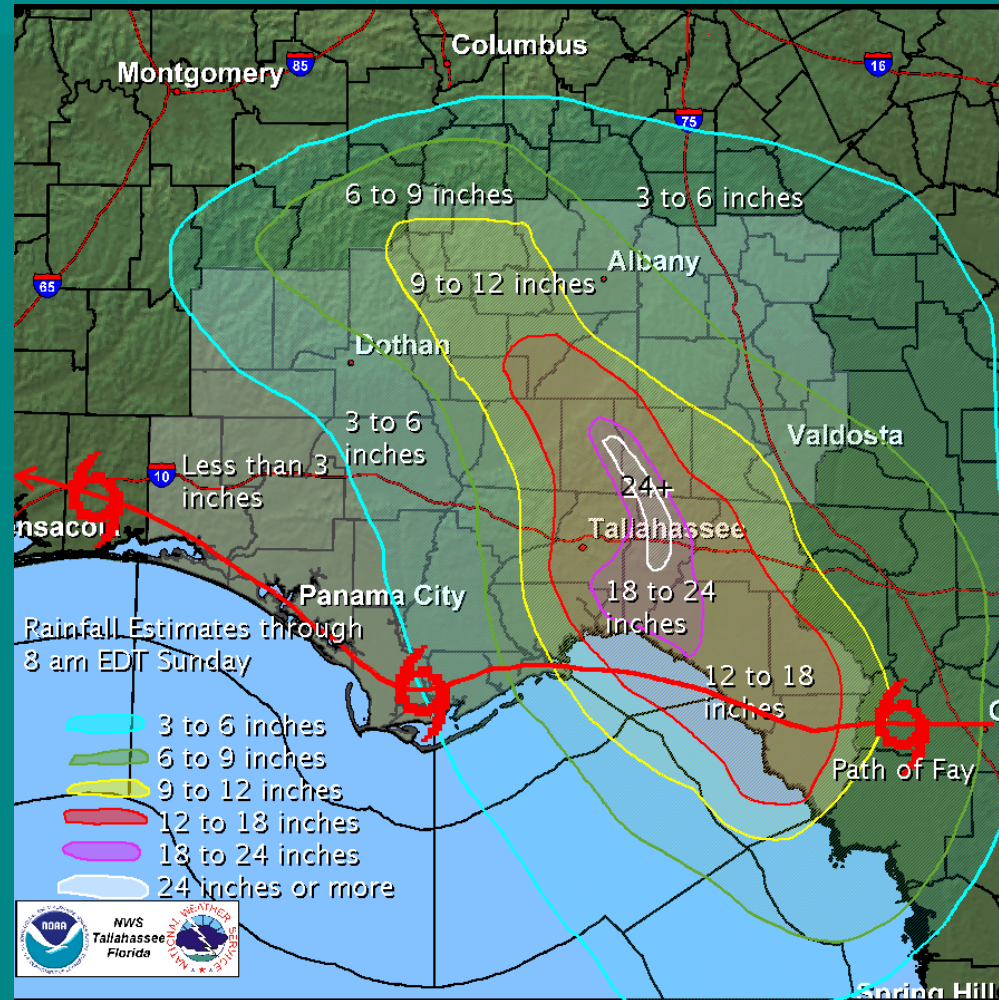
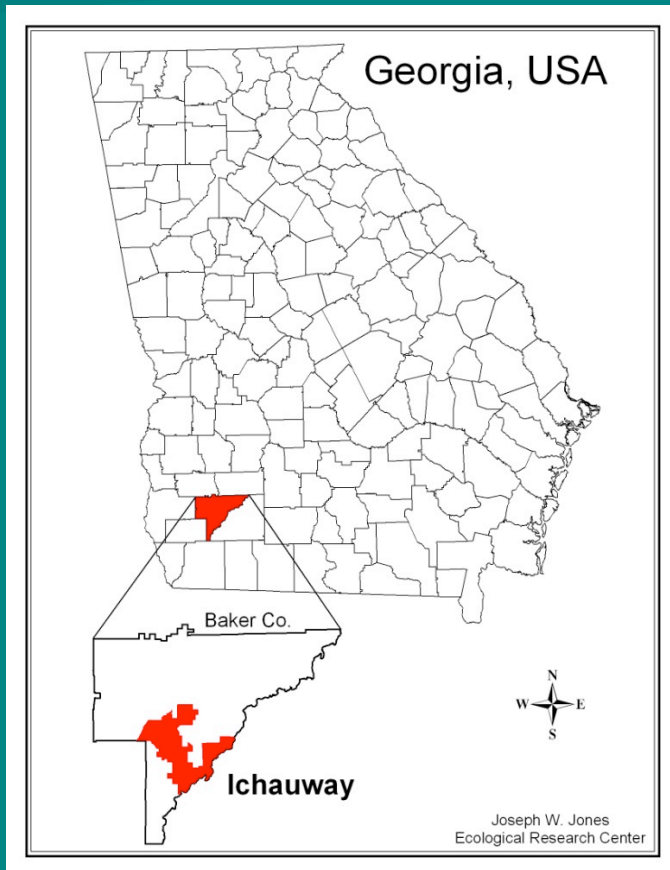
Abundance of mosquitoes over time

May 13- August 29, 2008

Total female mosquitoes collected over time



Then there was Fay

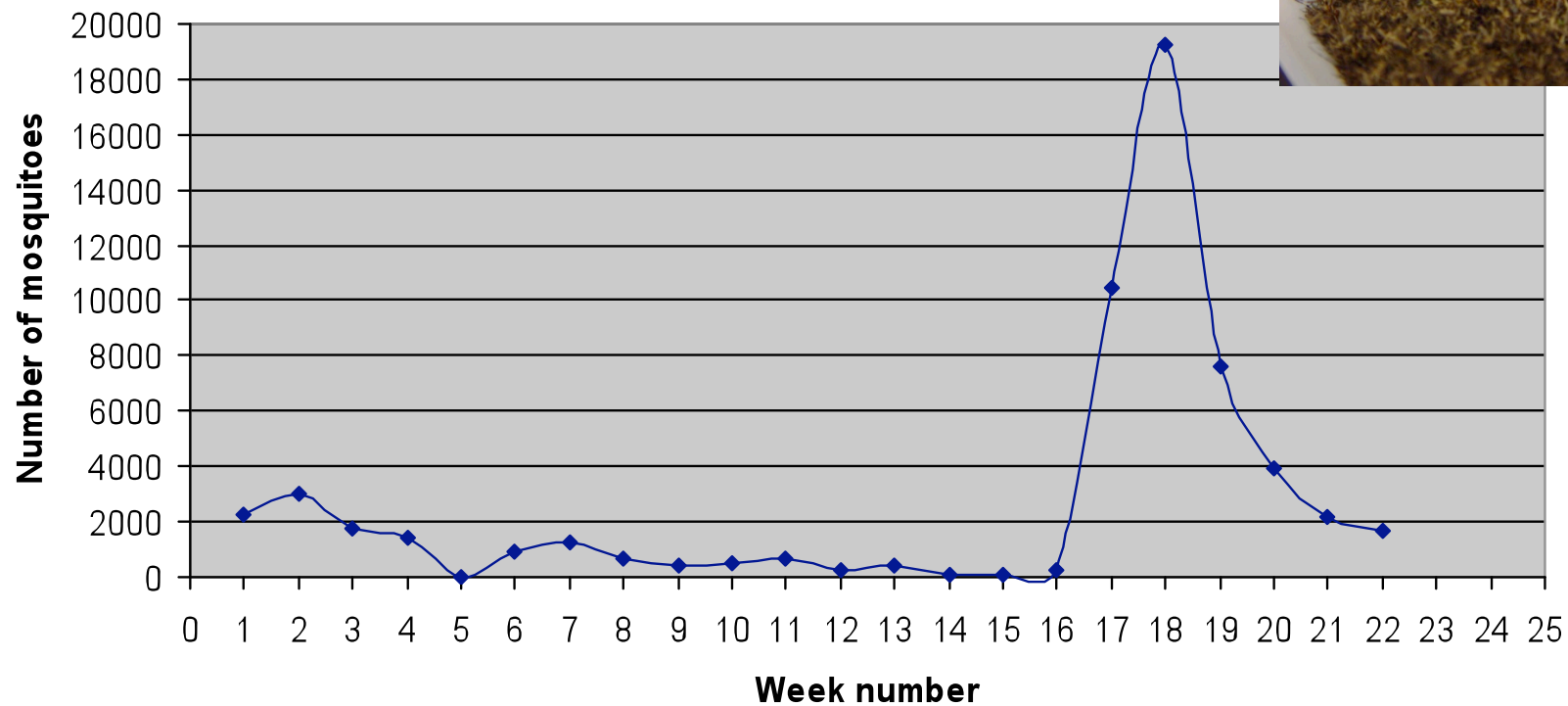


Abundance of mosquitoes over time

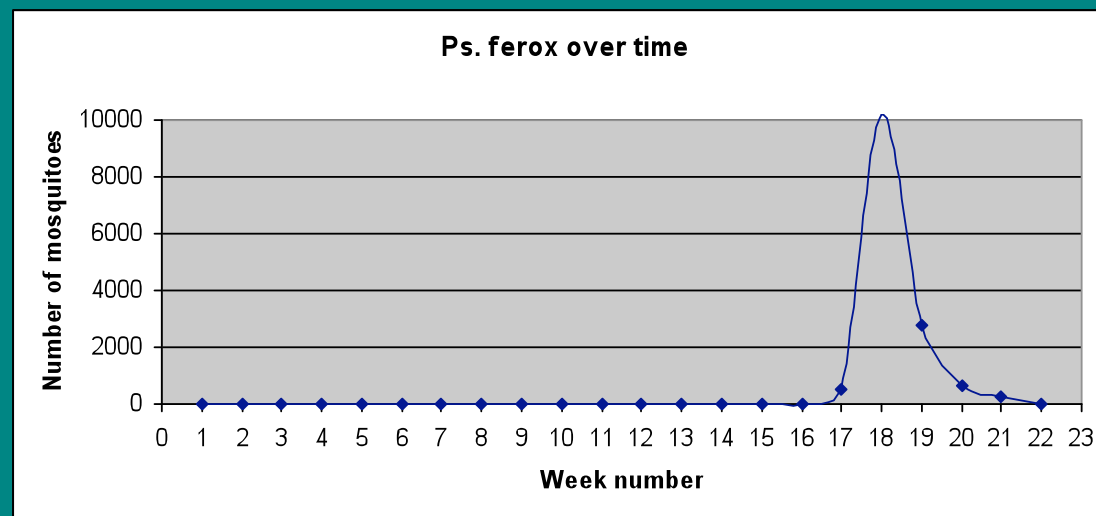
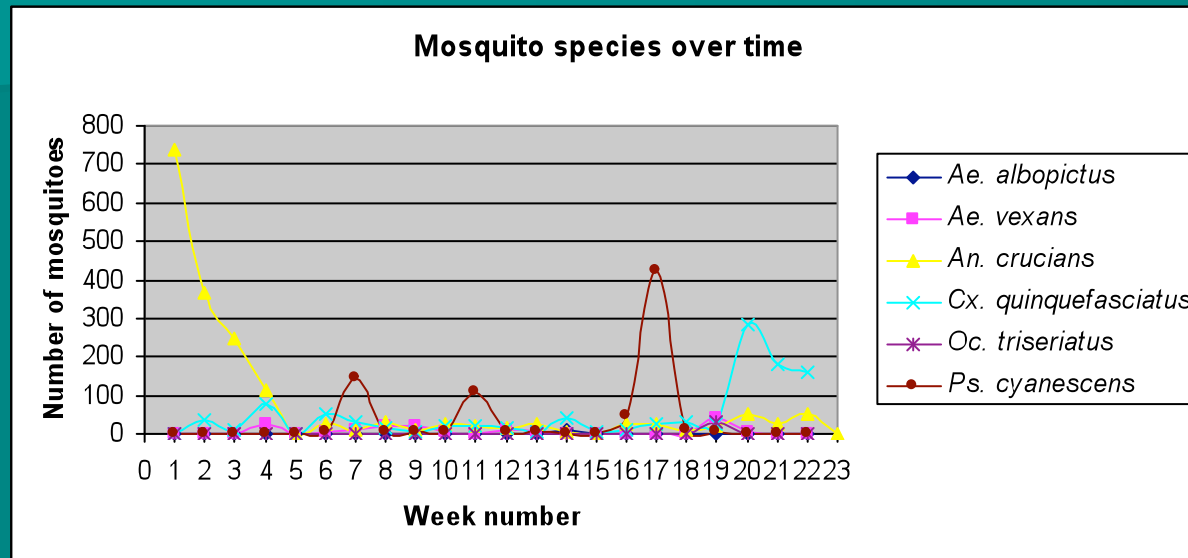
May 13- October 10, 2008



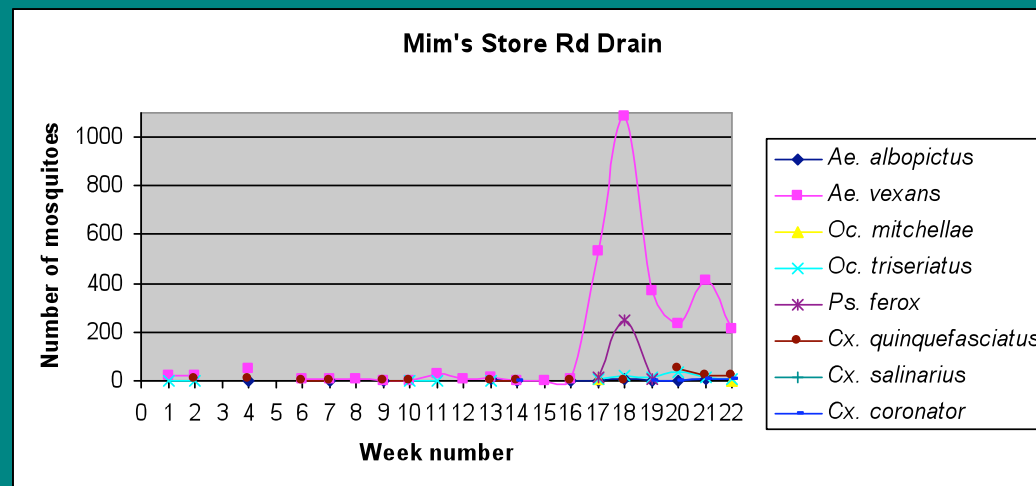
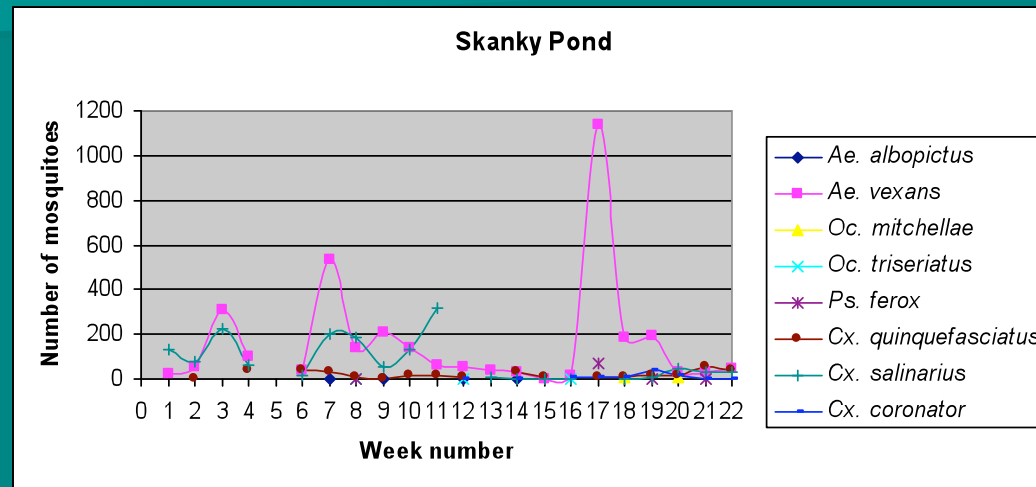
Total female mosquitoes collected over time



Selected species abundances over time



Comparison of Disturbed to Hardwood Depression



Preliminary results continued

- 175 blood-fed mosquitoes collected

-Species collected:

Ae. vexans

An. quadrimaculatus

Cx. salinarius

Cx. quinquefasciatus

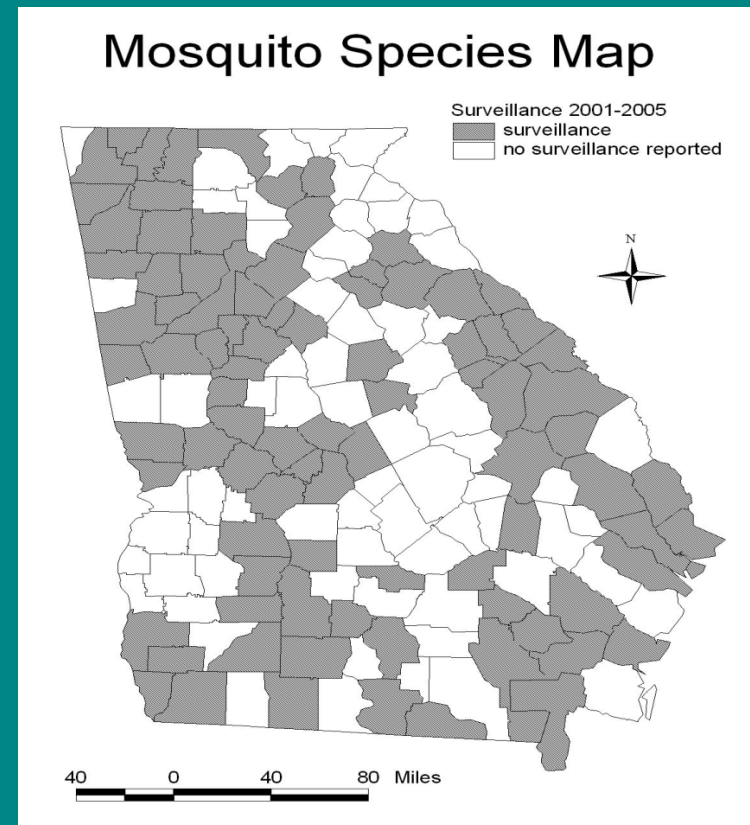
Ps. ferox ...



- Approx. 900 virus isolation pools

Practical Importance of Research

- Baker County Public Health Department
- Georgia DHR Division of Public Health
- GMCA species map



www.gamosquito.org/resources/maps/surveillance.jpg

AMCA Meeting 2009

What to look forward to seeing

- Comparison of:
 - Mosquito community composition
 - Species diversity
 - Arbovirus prevalence
 - Host-feeding patterns of mosquitoes

- Comparison to Valdosta

Acknowledgments

- Committee:
 - Steve Golladay
 - Alan Covich
 - Mark Blackmore
 - Danny Mead
- Golladay Lab
- Rosmarie Kelly
- Parker Whitt
- Julie McEntire
- Jones Center staff

