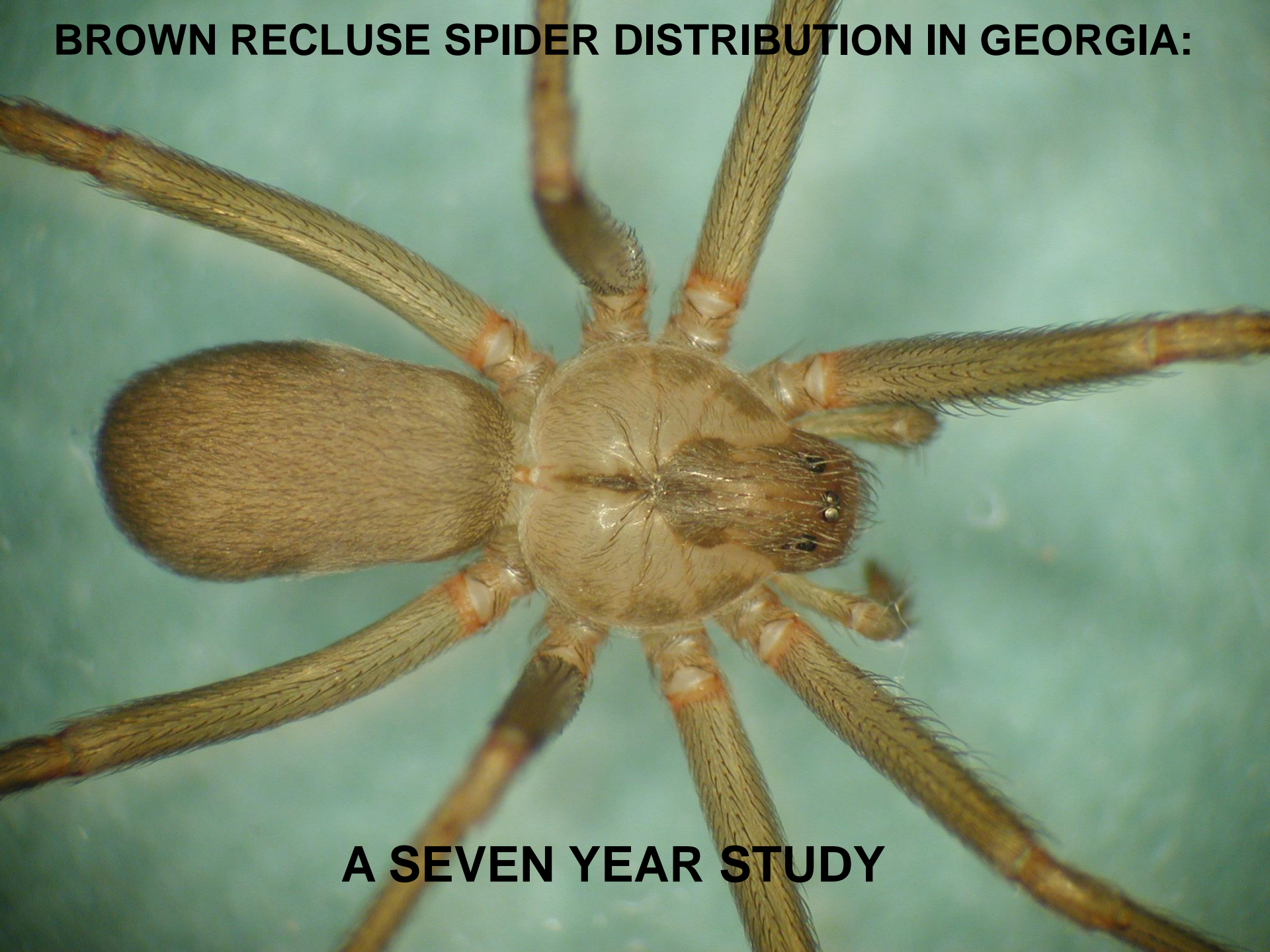


BROWN RECLUSE SPIDER DISTRIBUTION IN GEORGIA:

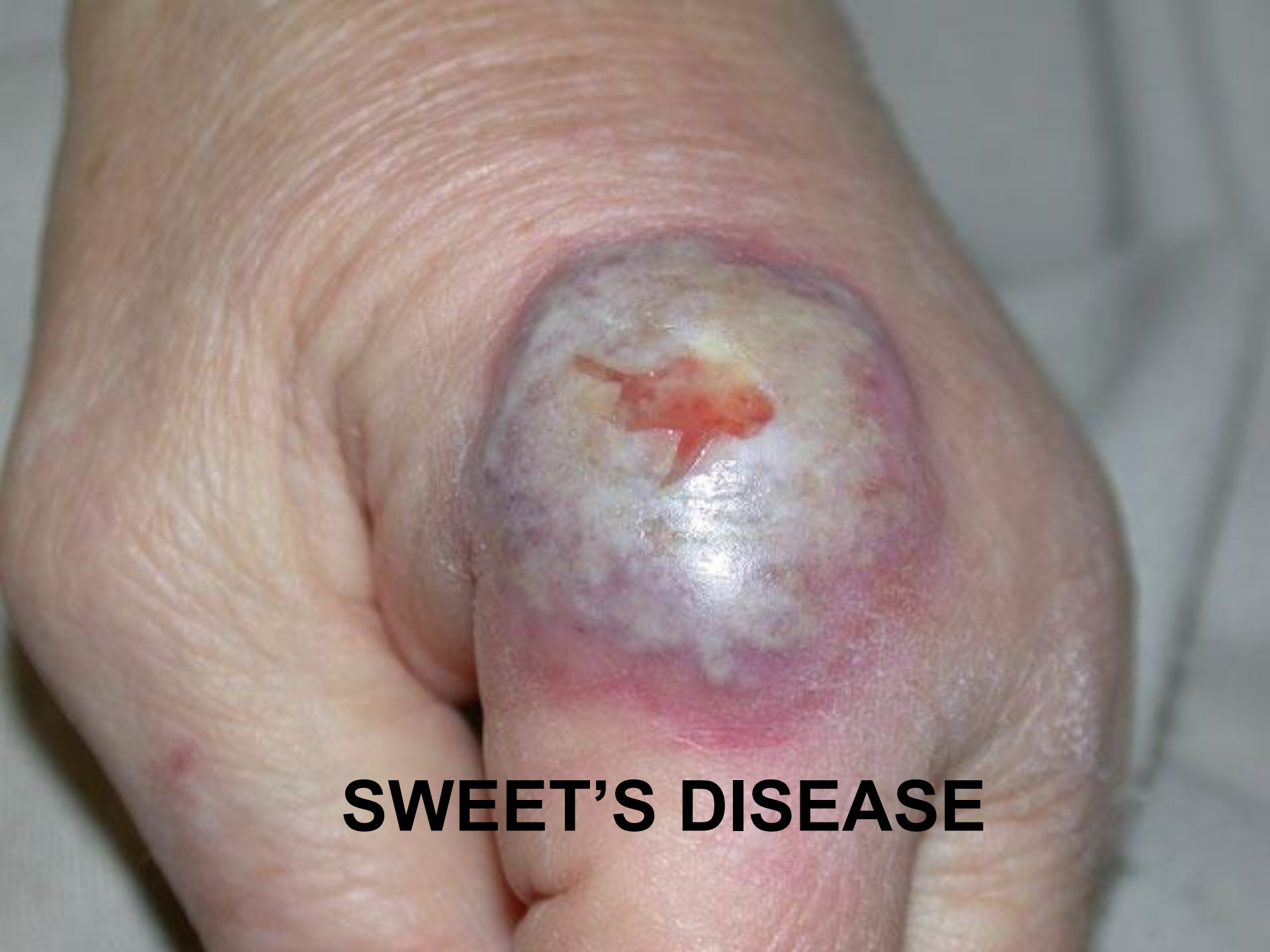


A SEVEN YEAR STUDY



BARN SPIDER





SWEET'S DISEASE





MRSA

METHICILLIN-RESISTANT *STAPHYLOCOCCUS AUREUS*

“POSSIBLE BROWN RECLUSE”



SOUTHERN HOUSE SPIDER



AMERICAN HOUSE SPIDER

LONG-BODIED CELLAR SPIDER







SOUTHERN HOUSE SPIDER



BROWN RECLUSE





BROWN RECLUSE



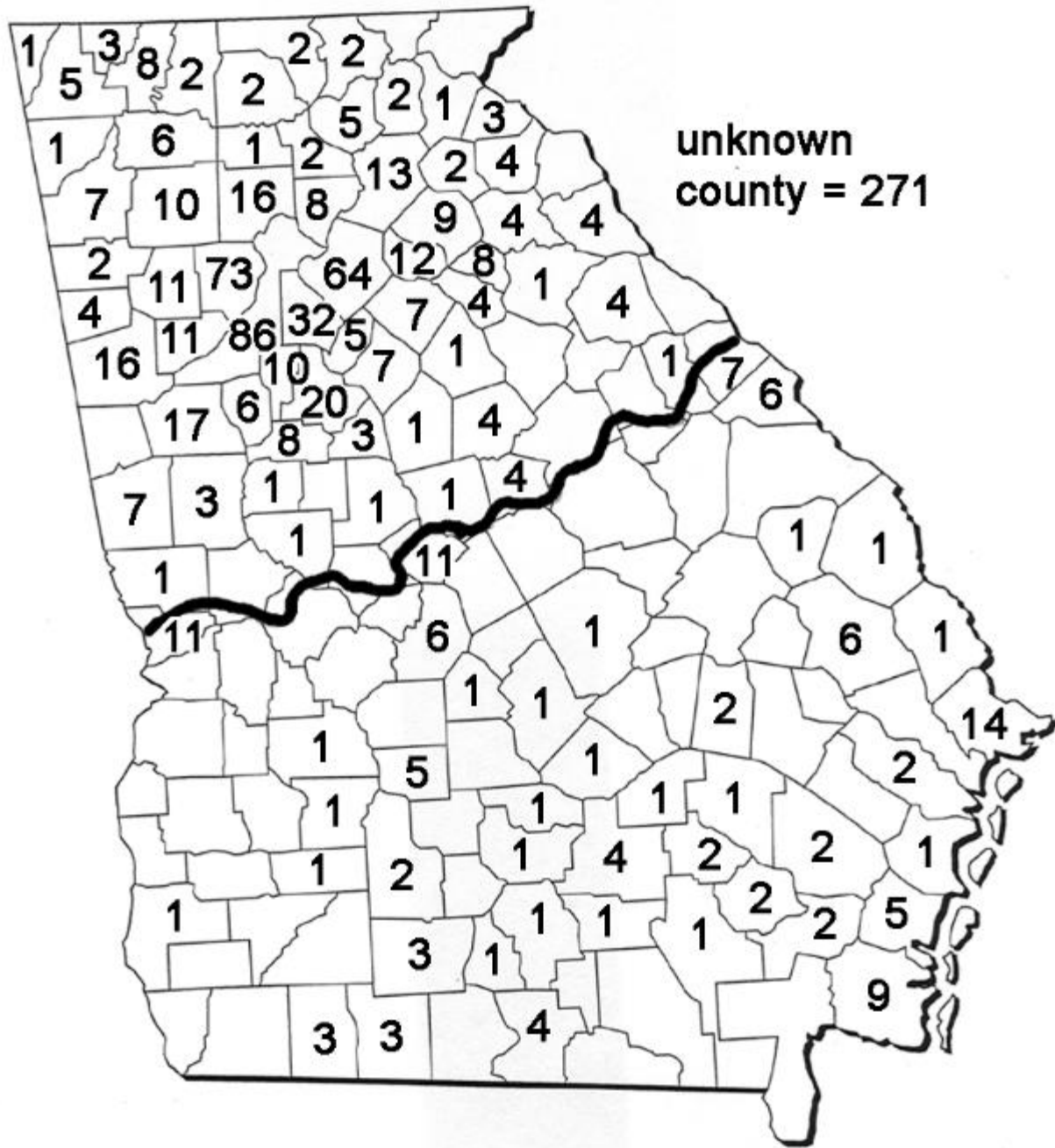
SOUTHERN HOUSE SPIDER



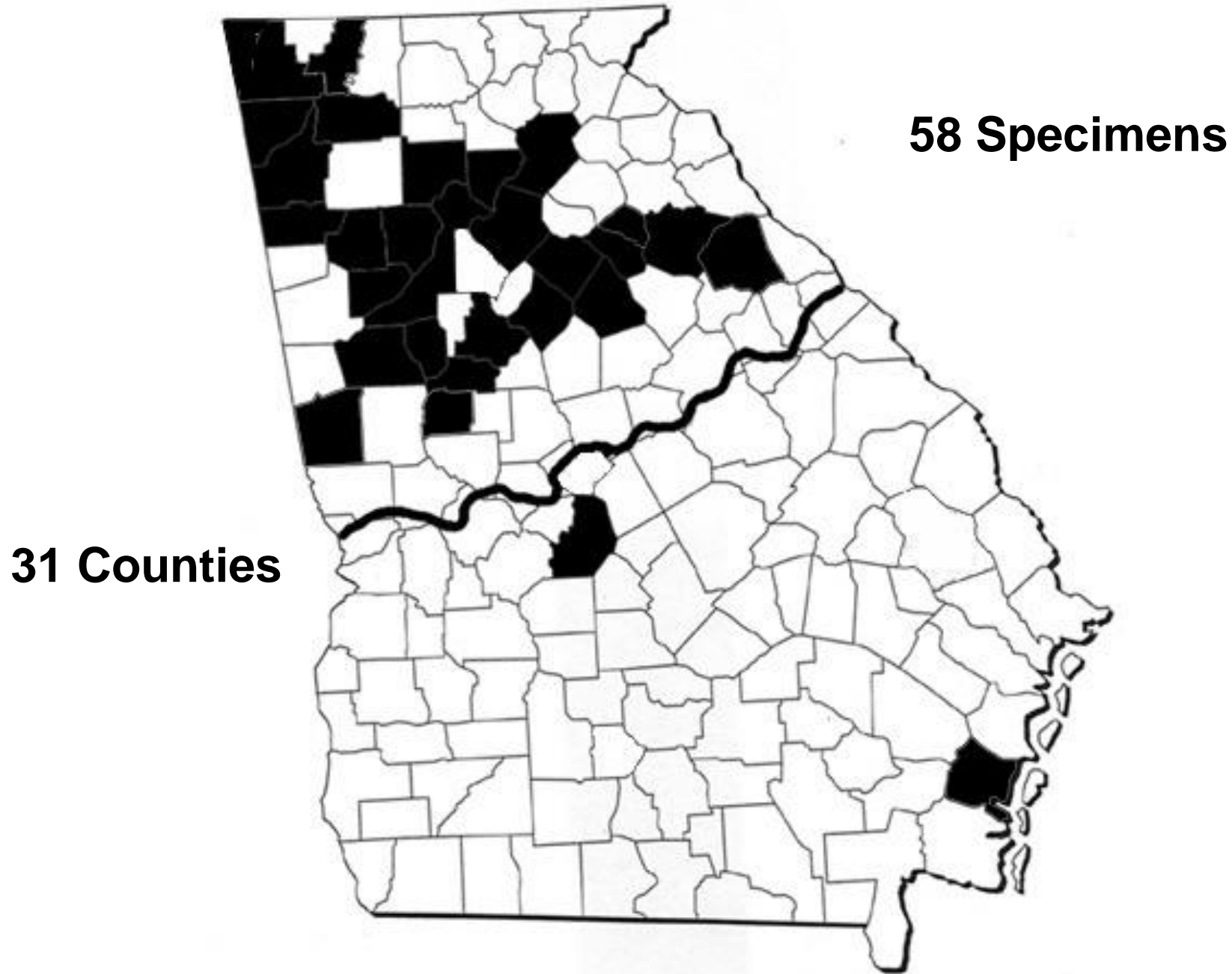




SPITTING SPIDER



BROWN RECLUSE SPIDER BITE REPORTS 2001-2005 (963 IN 103 COUNTIES)



ALL BROWN RECLUSE SPIDERS EVER COLLECTED IN GEORGIA

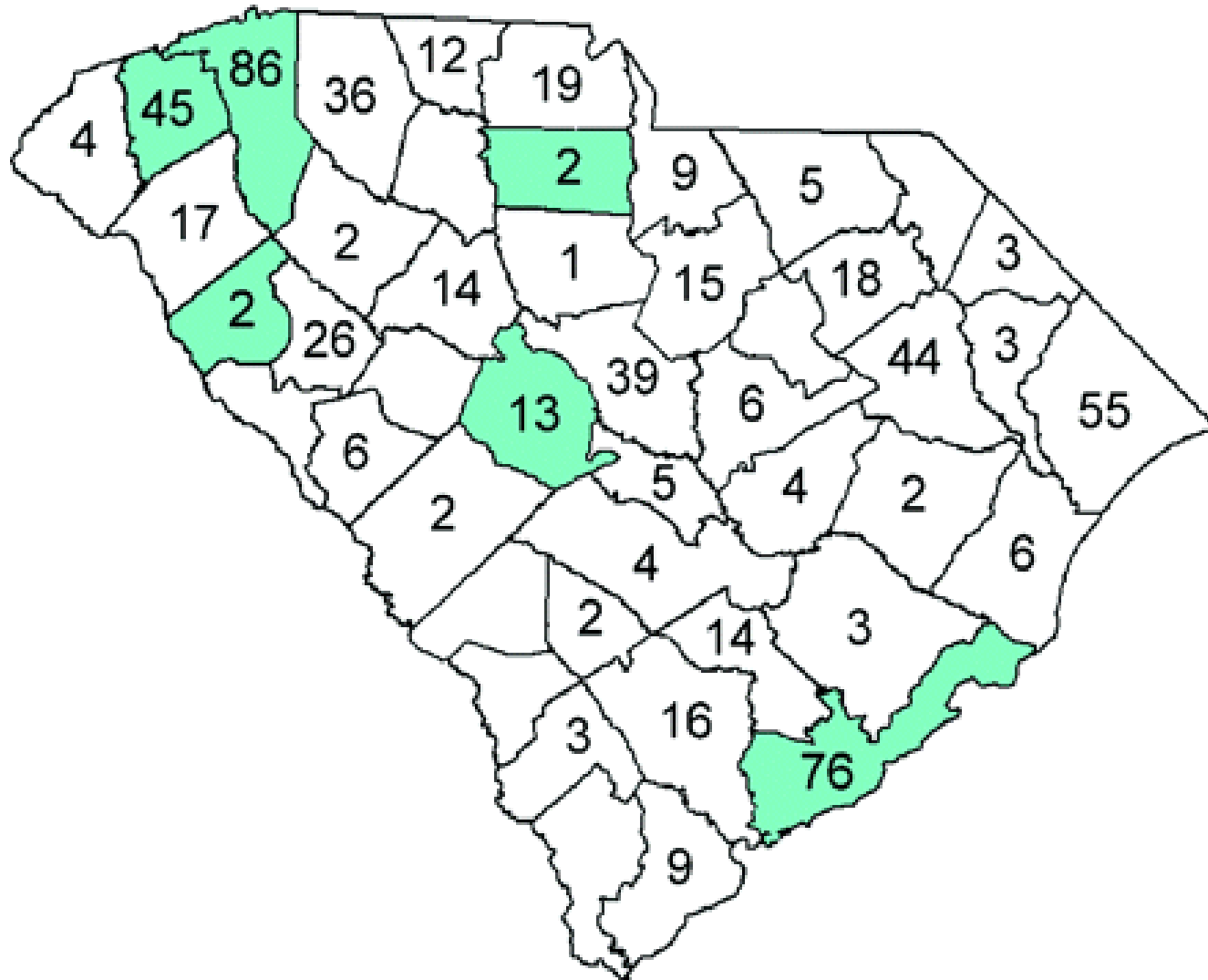
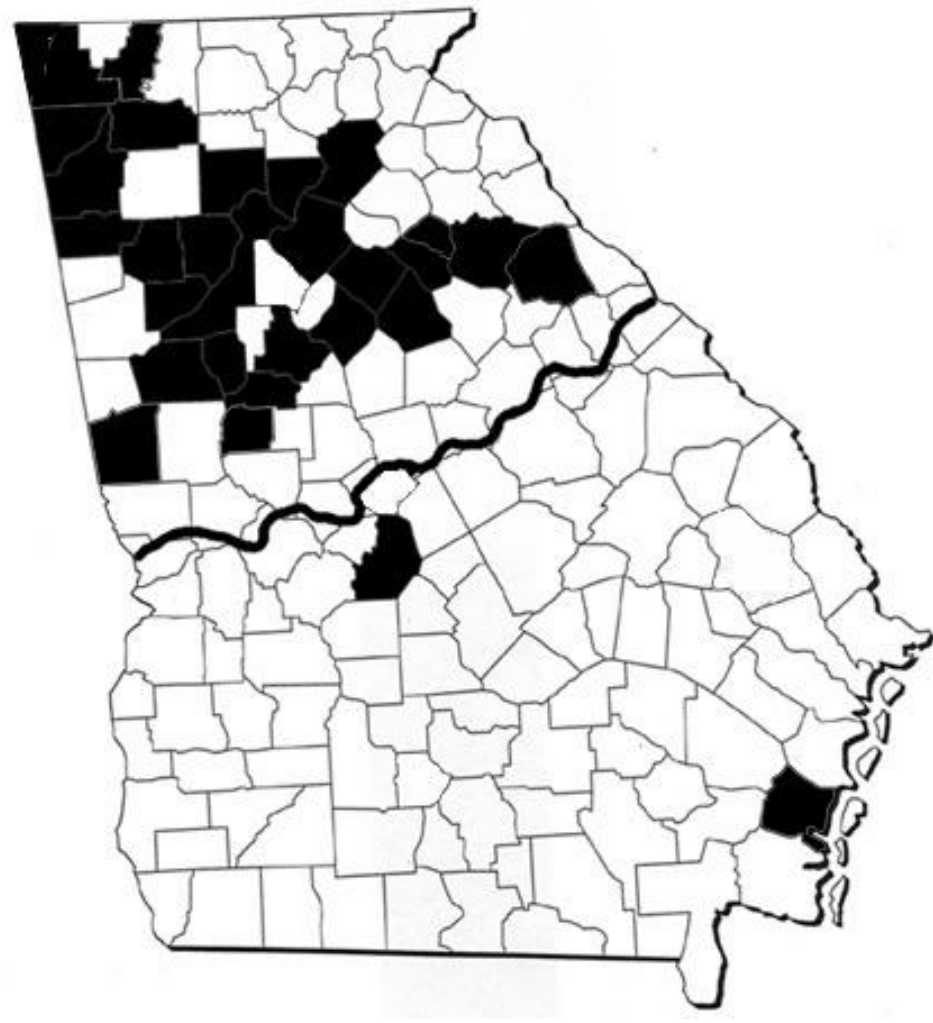
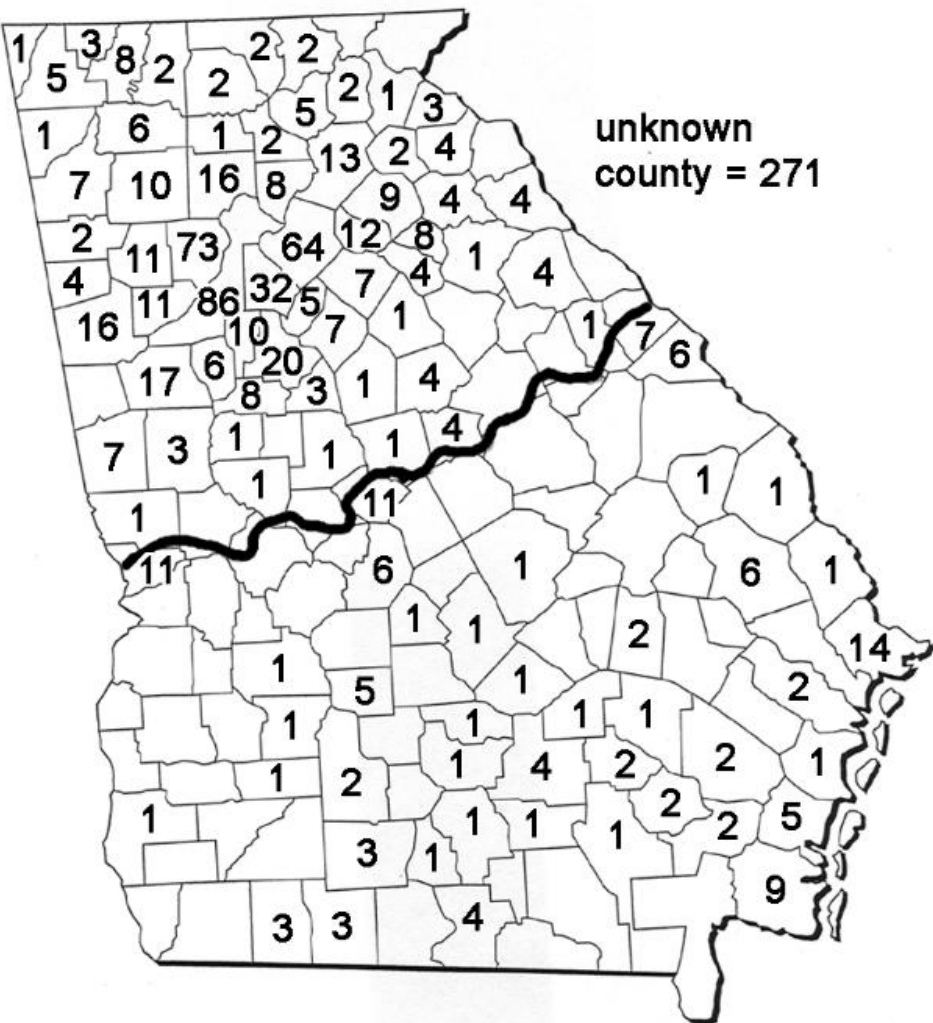


Figure 2. The number of brown recluse bites reported by primary care physicians in 2004, by county. (738)

TOTAL OF 44 BROWN RECLUSE SPIDERS COLLECTED IN SOUTH CAROLINA (6 COUNTIES)



Vetter, Hinkle & Ames. 2009. Distribution of brown recluse spider (Araneae: Sicariidae) in Georgia with comparison to poison center reports of envenomations. J. Med. Entomol. 46: 15-20.





METHICILLIN-RESISTANT *Staphylococcus aureus*



IS THIS A BROWN RECLUSE?



BROWN RECLUSE



Dr. Nancy Hinkle

Brown Recluse Study

Dept. Entomology

UGA

Athens GA 30602-2603