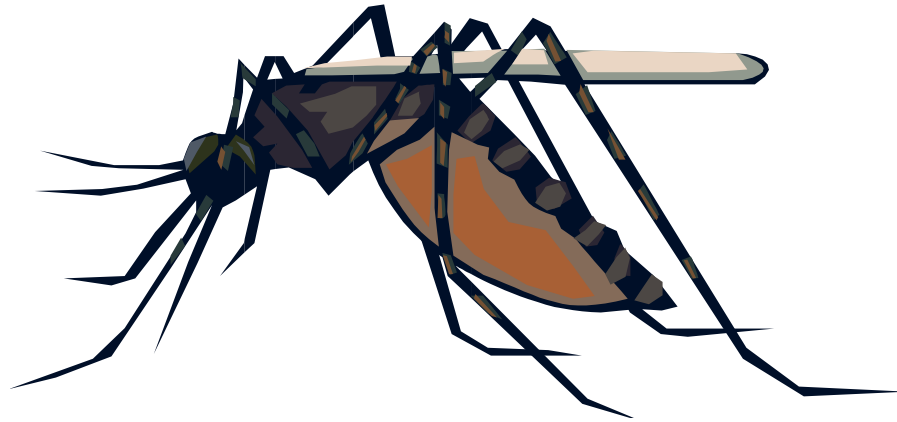


RICHMOND COUNTY MOSQUITO CONTROL



MISSION STATEMENT

To incorporate strategies of integrated mosquito control management that are effective, practical, environmentally safe and protect the health of Richmond County residents, as well as promote public education, in order to prevent large mosquito populations and the diseases that they transmit.



Richmond County
Health Department
**MOSQUITO
CONTROL**
Environmental Health Section





Richmond County
Health Department
**MOSQUITO
CONTROL**
Environmental Health Section



RICHMOND
HEALTH DE
**MOSQUITO
CONTROL**
ENVIRONMENTAL



MULE

MOSQUITO CONTROL

Richmond County
Environmental Health

Kawasaki

APRI-BOK

Kawasaki





Yellow D
SPRAY EQUIPMENT

MOSQUITO

Richmond
Environmental

CHRYSLER

LOBELCRAFT

4



Info by
SPRINGBOK



EMERGENCY 911

COST OF OPERATION

\$ 1.10

Per hour

Mule and Barrier Spray Unit

PRODUCTS WE USE

- **ADULTICIDES**

- PERMETHRIN SPRAY
- BARRIER SPRAY

- **LARVAICIDES**

- METHOPRENE
- MONO-MOLECULAR FILM
- BTI

324 SQUARE MILES



PROPOSED SCHEDULE

- APRIL 1ST
- BEGIN LARVICIDING
- RETENTION PONDS
- STORM DRAINS





PROPOSED SCHEDULE

- MAY 1ST
- BEGIN ADULTICIDING
- BARRIER SPRAYING
- 15 SQUARE BLOCK DOWNTOWN AREA





Walden County Health Department
MOSQUITO CONTROL
Department of Health Services







SURVEILLANCE

- WE DO AS WE CAN WITH THE HELP OF
ROSMARIE KELLY
 - Public Health Entomologist
 - Georgia Division of Public Health

GRAVID TRAP





CDC LIGHT
TRAP

2007 Seasonal Report

Mosquito Surveillance

Richmond County

Mosquito surveillance was conducted weekly from June 4th through September 11th (with the exception of one week in July). Trapping was conducted at 5 different sites per week with 1 CDC CO₂-baited light trap and 1 Gravid trap at each site for a period of 24 hours. A **total of 19,957 mosquitoes were collected** and 164 mosquito pools were sent for virus testing, with **1 pool testing positive for WNV in August.**

**A total of 284 male mosquitoes were counted, but could not be identified and a total of 183 *Culex* mosquitoes were counted, but could not be identified to species. A total of 22 mosquitoes were counted, but could not be identified to genus or sex.

Mosquito	Total	Percent (%) of	Huma n	Medical
Species	Mosquitoes	Total Collected	Biter?	Importance
<i>Culex salinarius</i>	7803	39.1	Yes	WNV, EEE, DHW
<i>Coquillettidia perturbans</i>	4523	22.7	Yes	WNV, EEE
<i>Anopheles crucians complex</i>	2413	12.1	Yes	WNV, EEE, DHW
<i>Aedes vexans</i>	1759	8.8	Yes	WNV, EEE, DHW
<i>Aedes albopictus</i>	1129	5.7	Yes	WNV, EEE, DHW
<i>Anopheles quadrimaculatus</i>	830	4.2	Yes	WNV, EEE, DHW
<i>Culex pipiens complex</i>	452	2.3	Yes	WNV, EEE, DHW, SLE
<i>Culex erraticus</i>	205	1.0	Maybe	WNV, EEE
<i>Psorophora columbiae</i>	160	0.8	Yes	WNV, EEE
<i>Psorophora ferox</i>	49	0.2	Yes	WNV, DHW
<i>Anopheles punctipennis</i>	40	0.2	Yes	WNV, EEE, DHW
<i>Ochlerotatus triseriatus</i>	34	0.2	Yes	WNV, EEE
<i>Psorophora howardii</i>	20	0.1	Yes	WNV
<i>Uranotaenia sapphirina</i>	12	<0.1	No	WNV, EEE
<i>Aedes taeniorhynchus</i>	9	<0.1	Yes	WNV, DHW
<i>Aedes atlanticus/tormentor</i>	7	<0.1	Yes	WNV, EEE
<i>Culex restuans</i>	6	<0.1	Yes	WNV, EEE, SLE
<i>Psorophora ciliata</i>	4	<0.1	Yes	WNV
<i>Psorophora cyanescens</i>	4	<0.1	Yes	
<i>Culex territans</i>	4	<0.1	No	WNV
<i>Culex nigripalpus</i>	3	<0.1	Yes	WNV, DHW, SLE
<i>Ochlerotatus fulvus pallens</i>	2	<0.1	Yes	

COMPLAINTS

- 2008

323

- 2009

593

- SO FAR

PARTNERING



WITH OUR NEIGHBORS

AUGUSTA SOLID WASTE DEPT



Augusta



Regional Airport

NORTH ENTRANCE



Aflin CORPORATION
AUGUSTA PLANT

A stone wall with a central white plaque. The plaque contains the text "AUGUSTA COUNTRY CLUB" and "EST. 1899". The wall is constructed from irregular, grey and brown stones. The plaque is a smooth, light-colored surface. The text is in a dark, serif font. The lighting is bright, casting shadows on the wall.

AUGUSTA COUNTRY CLUB
EST. 1899

A photograph of a brick wall with a white railing. A large sign is mounted on the wall, featuring the text "AUGUSTA STATE UNIVERSITY" in large, bold, black letters, and "University System of Georgia" in smaller, black letters below it. The sign is set against a light-colored, textured wall. In the foreground, there are green bushes and two black, cylindrical outdoor lights.

AUGUSTA STATE UNIVERSITY
University System of Georgia



MEMBERS ONLY

WHAT DO PARTNERS DO ?

- WE PROVIDE

THEY WANT TO
SERVICE THEIR OWN
AREA AND
PROPERTY

TRAINING
CONTACTS
SUPPORT
SURVIELLANCE

MY GREATEST CHALLENGE

HAVE YOU EVER SEEN A
“REDNECK POOL”?



POOL PROBLEMS

- POOLS IN THE SYSTEM 58
- POOLS ON MAINTINENCE 21
- POOLS IN COURT 7
- POOLS COMPLETED 30

BEFORE AND AFTER

POOL PHOTOS



GORDON
PLAZA

THRIFT STORE

THRIFT STORE

10 FT

8 FT

8 FT





























3 FT
NO DIVING
0.9
m



3 FT
NO DIVING
0.9
m

3 FT





COMMUNITY
INVOLVEMENT
CHRISTMAS PARADE





Environmental Health
Richmond County
Health Department







BROAD

Richmond County
Health Department
**MOSQUITO
CONTROL**
Environmental Health







CHRIS KING AMBASSY PARADE
3RD PLACE WILL FLOAT

EDUCATIONAL PROGRAMS

- CIVIC GROUPS
- SCHOOLS
- HOMEOWNERS ASSOCIATIONS
- BUSINESSES

QUESTIONS

? ? ? ? ? ? ? ? ? ? ? ? ? ? ? ?

? ? ? ?

? ? ? ?

? ? ? ?

WE HAVE SOME HANDOUTS
FOR YOU TO TAKE HOME TO
HELP YOU WITH MOSQUITO
PROBLEMS AROUND THE
HOUSE



**THANK YOU FOR
YOUR TIME!**

MOSQUITO ID CLASS

WAS CONDUCTED IN AUGUSTA AT THE
HEALTH DEPT TRAINING CLASSROOM

MAY 11-12, 2009



THE CLASS WAS
CONDUCTED BY

STAKEMAN AND ROSMARIE



D4

KREK WHI
S KELL
W. ga masqu

THE NEXT FRONTIER



TIRES

THANK YOU FOR YOUR TIME