

Central Life Sciences

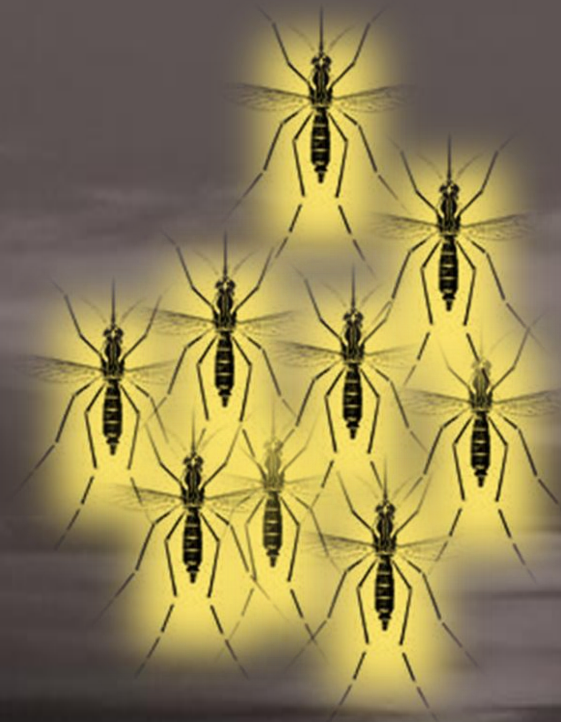
Larvicides

Adulticides

**Barrier
Sprays**

Central Life Sciences

Keith L. Haas, BCE



Central Life Sciences

Larvicides

Adulticides

**Barrier
Sprays**

Larvicide Formulations

- 9 forms for varied habitat
- 2 liquids
- 3 briquets
- 2 granular forms
- 2 pellet forms



Adulticides

- **Zenivex E20 and E4**
 - **No PBO**
 - **Oil based**
 - **High LD₅₀**
 - **Reduced risk classification from the EPA**



How does Zenivex Compare?

Example from Natrona County Wyoming

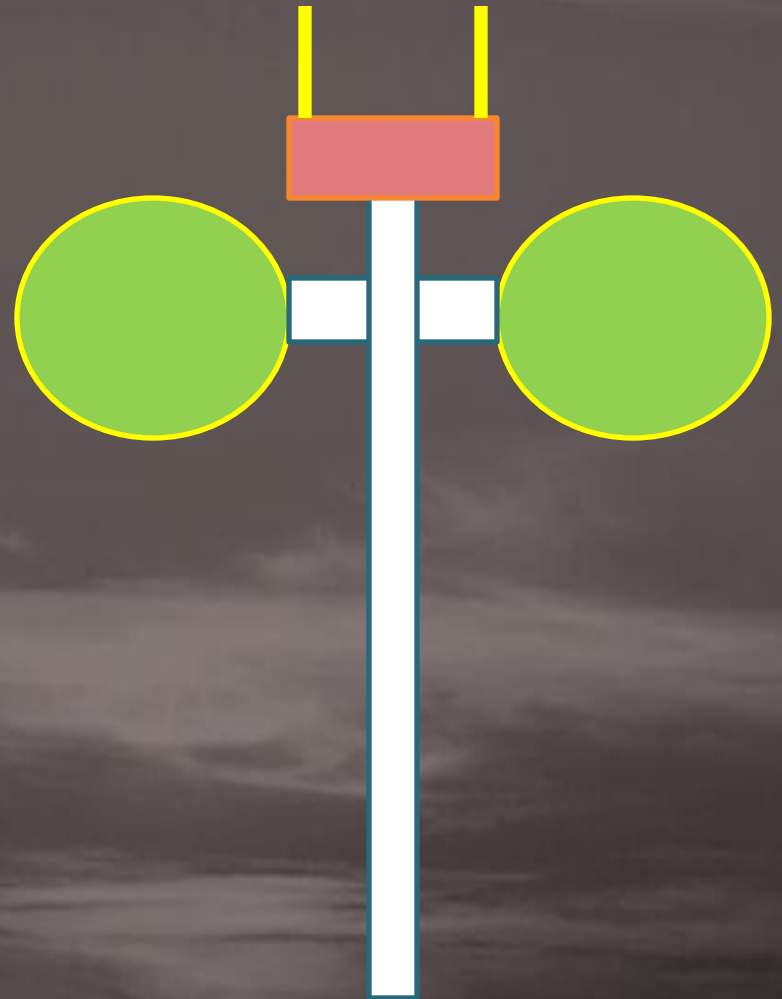
ULV Testing Factors

- Equipment calibration
- Wind
- Temperatures
- Thermal columns



Field Station

- Support poles
- 2- 4 bioassay cages
- Motorized collector
- 3mm Teflon coated slides
- 9 Exposed stations
- 2 Control stations

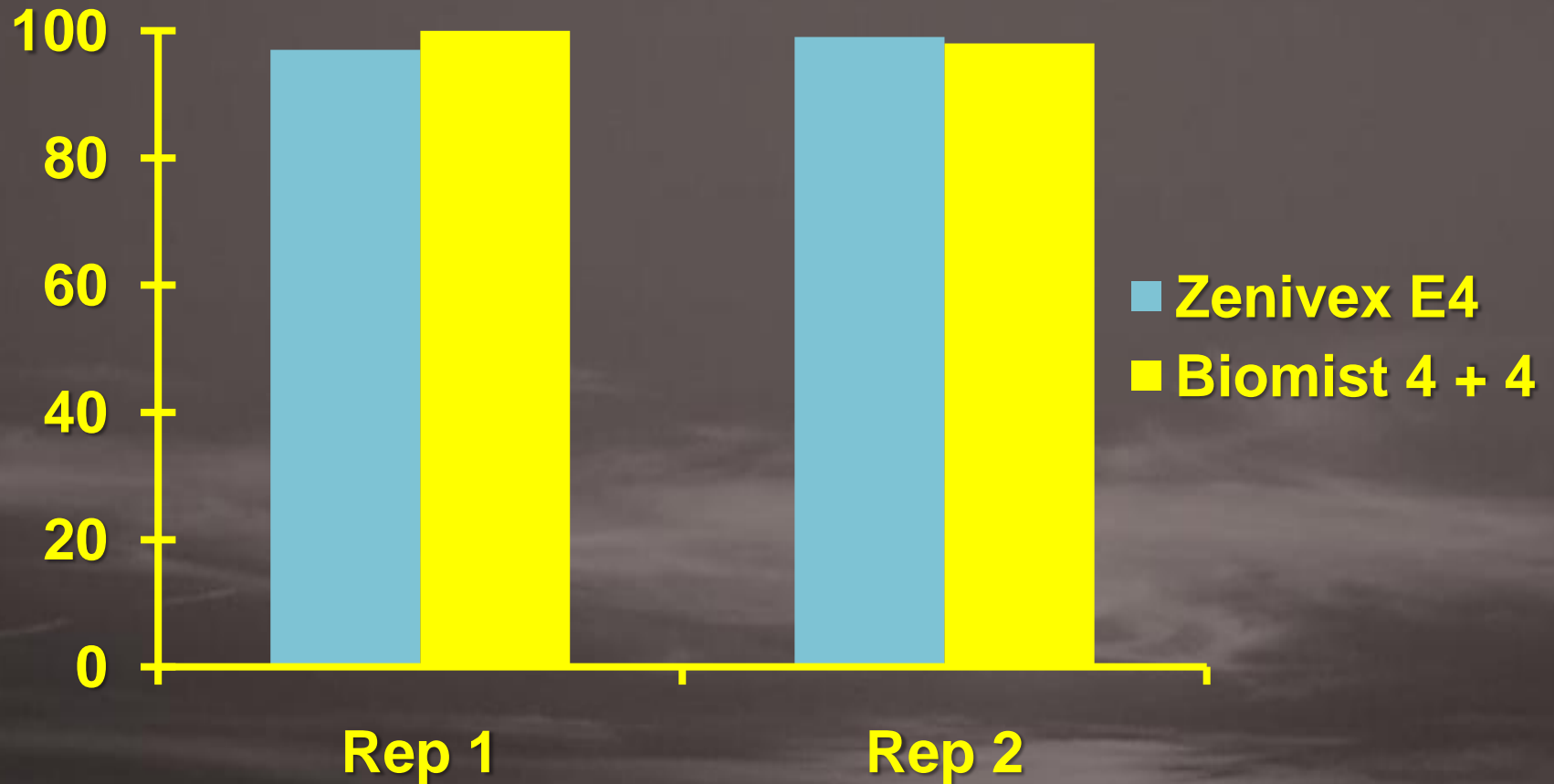


Product Comparison

- Zenivex E4
 - 6 ounces per minute
 - 10 mph
 - Grizzly
- Biomist 4+4
 - 6 ounces per minute
 - 10 mph
 - Grizzly

Trial Summary

Percent Control



Barrier Sprays

- Exceptional Plant Safety
- Low Application Cost
- When dry no honey bee mortality



Central Life Sciences

- Larvicides
- Adulticides
- Barrier Sprays

Thank You!