



Georgia Department of Public Health

Environmental Health Emergency Preparedness and Response

Environmental Health Emergency Planning

Byron Lobsinger, B.S., GaCEM, EMHP, EHEP

Chris Kumnick, Interim Director of Environmental Health

EH Strike Team Disaster Response



We Protect Lives.

Environmental Health Section

“Execution of the DPH Hedgehog”

Food Service Program

- **Inform** the public of Foodborne-related Hazards
- **Prevent** foodborne-related illness through monitoring, assessments, and education
- **Protect** the public from risks associated with foodborne illness

Inform

the public of Environmental Health Hazards

Prevent

illness and injury through monitoring, assessments, and education

Protect

the public from Environmental Health Risks

Chemical Hazards Program

- **Inform** the public about hazardous chemicals in the environment
- **Prevent** exposures by evaluating environmental and health outcome data
- **Protect** the public from hazardous chemical exposures

Evaluation & Support Program

- **Inform** Environmental Health staff of best practices discovered from analysis of their work
- **Prevent** illness through development of evidence based performance metrics, policies, and training
- **Protect** the capabilities of Environmental Health operations through evaluation, planning assistance, and administrative support

Land Use Program

- **Inform** the public of potential health hazards associated with onsite septic systems and non-public drinking wells.
- **Prevent** illness through education, monitoring, assessment, and enforcement
- **Protect** the public by managing science based standards and ensuring a competent workforce.

Childhood Lead Prevention & Healthy Homes Program

- **Inform** the public about housing hazards that can cause unsafe or unhealthy environments
- **Prevent** injury or illness through monitoring, education, assessment and provision of direct services
- **Protect** all generations of Georgians by ensuring that each home is safe and healthy

Emergency Preparedness & Mass Fatality Planning

- **Inform** stakeholders of Environmental Health preparedness plans for emergency response.
- **Prevent** additional illness or loss of life through monitoring, assessments, training and education
- **Protect** communities during health emergencies utilizing Environmental Health Strike Teams and/or coordinated mass fatality resources.

Public Swimming Pool Program

- **Inform** the public of recreational water-related hazards
- **Prevent** waterborne illness and injury through monitoring, assessments, and education
- **Protect** the public from recreational waterborne illness and injury risks

Indoor Tanning Facilities Program

- **Inform** the public of hazards related to indoor tanning
- **Prevent** ultraviolet (UV) radiation-related skin cancer and injury through monitoring and education
- **Protect** the public from risk associated with UV radiation in tanning devices

Tourist Accommodation Program

- **Inform** the public of lodging-related hazards
- **Prevent** illness and injury through monitoring, assessments, and education
- **Protect** the public from risk associated with food-waterborne illness and unsanitary conditions

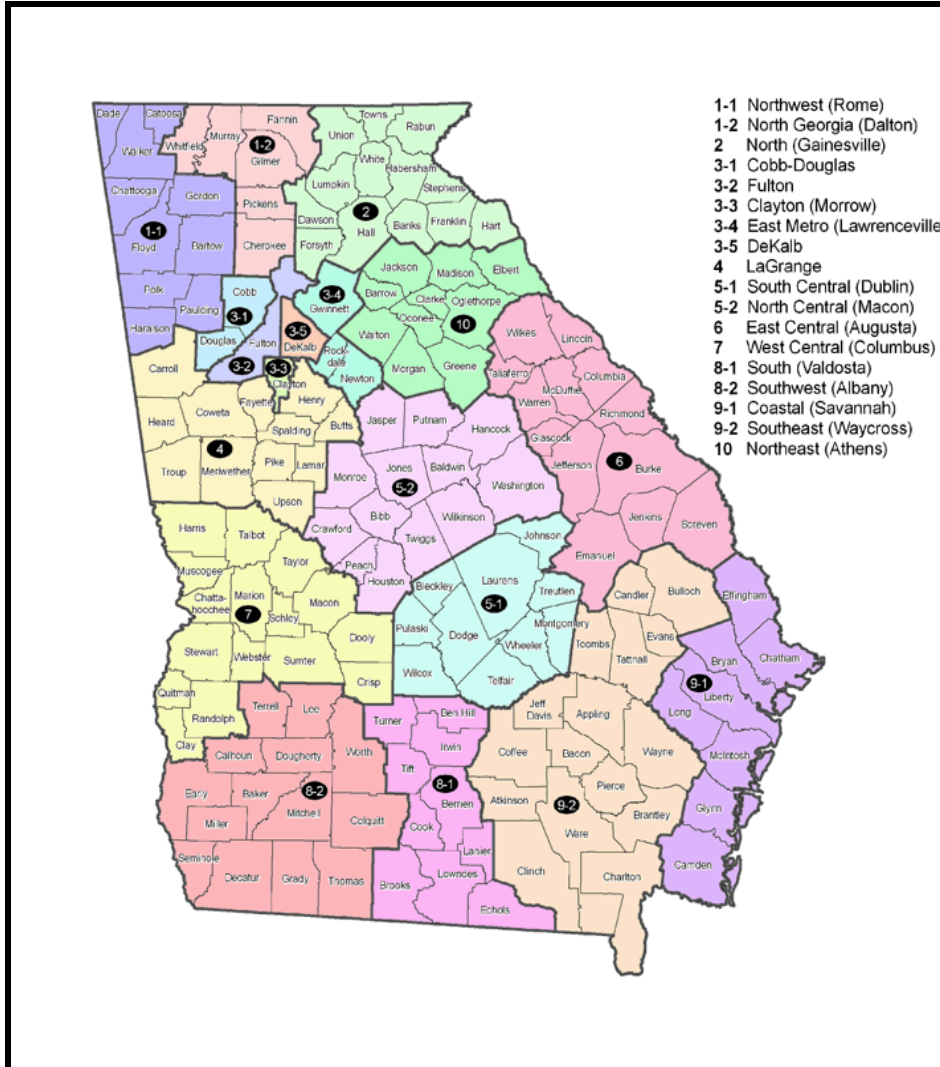
Public Health Entomology

- **Inform** the public of hazards and disease associated with insect and other arthropod pests of public health importance
- **Prevent** illness or infestation through monitoring, assessment, education, and collaboration with partners
- **Protect** the public from risks associated with insects and other arthropods of public health importance

BEST AT

RESOURCE ENGINE

Public Health System in Georgia



GA Department
of Public Health



18 Public Health
Districts



159 County
Health
Departments
(Boards of Health)

Environmental Health Workforce

Environmental Health services are provided by approximately **~424 professional staff statewide.**

- 20 State Office
- 18 EH District Directors
- 386 County Environmental Health Specialists

“Environmental Health...

Touching Everyone’s Life Every Day”

Environmental Health (EH)

Public Health Entomology

- **Public Health Entomologist**

- Complaint Response
- Mosquito Surveillance
- Public Education
 - Bedbugs
 - Tick-borne Disease
 - Vector Control



- **New Vector Surveillance Staff**

- May 16, 2016-Start Date



- 2-weeks Training
 - » PH 101
 - » Mosquito ID
 - » Surveillance Techniques
 - » Con Op Plan-CDC Risk Categories
 - » Emergency Vector Control
 - » Communication

- June 1, 2016

- Out in Regions and Introductions
- Surveillance
- Education



Environmental Health Education

CONTROL MOSQUITOES TIP 'n TOSS

Mosquitoes breed in standing water. To reduce the mosquito population around your home and property, eliminate all standing water and debris.

- 1** Pool cover that collects water, neglected swimming pool or child's wading pool
- 2** Birdbath (change water weekly) and garden pond (stock with fish)
- 3** Any toy, garden equipment, or container that can hold water
- 4** Flat roof with standing water
- 5** Clogged rain gutter (home and street)
- 6** Trash and old tires; Drill drain holes in bottom of tire swings
- 7** Tree rot hole, hollow stump or rain puddle
- 8** Repair missing, damaged, or improperly installed screens
- 9** Uncovered boat or boat cover that collects water
- 10** Leaky faucet (repair) or pet bowl (change water daily)

ILLUSTRATIONS ADAPTED FOR USE WITH PERMISSION FROM THE CDC

Find out what it takes to stop Zika
Please visit dph.georgia.gov/zika

WHAT ARE THE FACTS? Zika Virus Infection

PREGNANCY?

- Pregnant women should not travel to these countries
- Male sex partners who have traveled to these countries should use condoms during sex

These countries have had outbreaks of Zika virus: Americas, Caribbean, Mexico, Pacific Islands

HOW IS ZIKA TRANSMITTED?

- Primarily transmitted by infected mosquitoes
- *Aedes aegypti* (yellow fever mosquito) and *Aedes albopictus* (Asian tiger mosquito)
- Mosquitoes go from egg to adult in a week to 10 days
- Same mosquitoes transmit dengue, chikungunya, Zika viruses
- Zika is passed from an infected person to a mosquito through a bite, mosquito then bites someone else
- Sexual transmission of Zika cases have been documented

WHAT ARE THE SYMPTOMS?

- fever and headache
- conjunctivitis
- rash
- joint pain
- muscle pain

80% of Zika infected don't know they are sick.

NO VACCINE TO PREVENT • NO MEDICINE TO TREAT

HOW DO YOU PROTECT AND PREVENT?

- Use EPA registered insect repellents containing DEET** (during travel and 3 weeks after)
- Stay in places with air conditioning or window and door screens**
- Wear protective clothing** (long-sleeved shirts, long pants and socks)
- Sleep under a mosquito net**

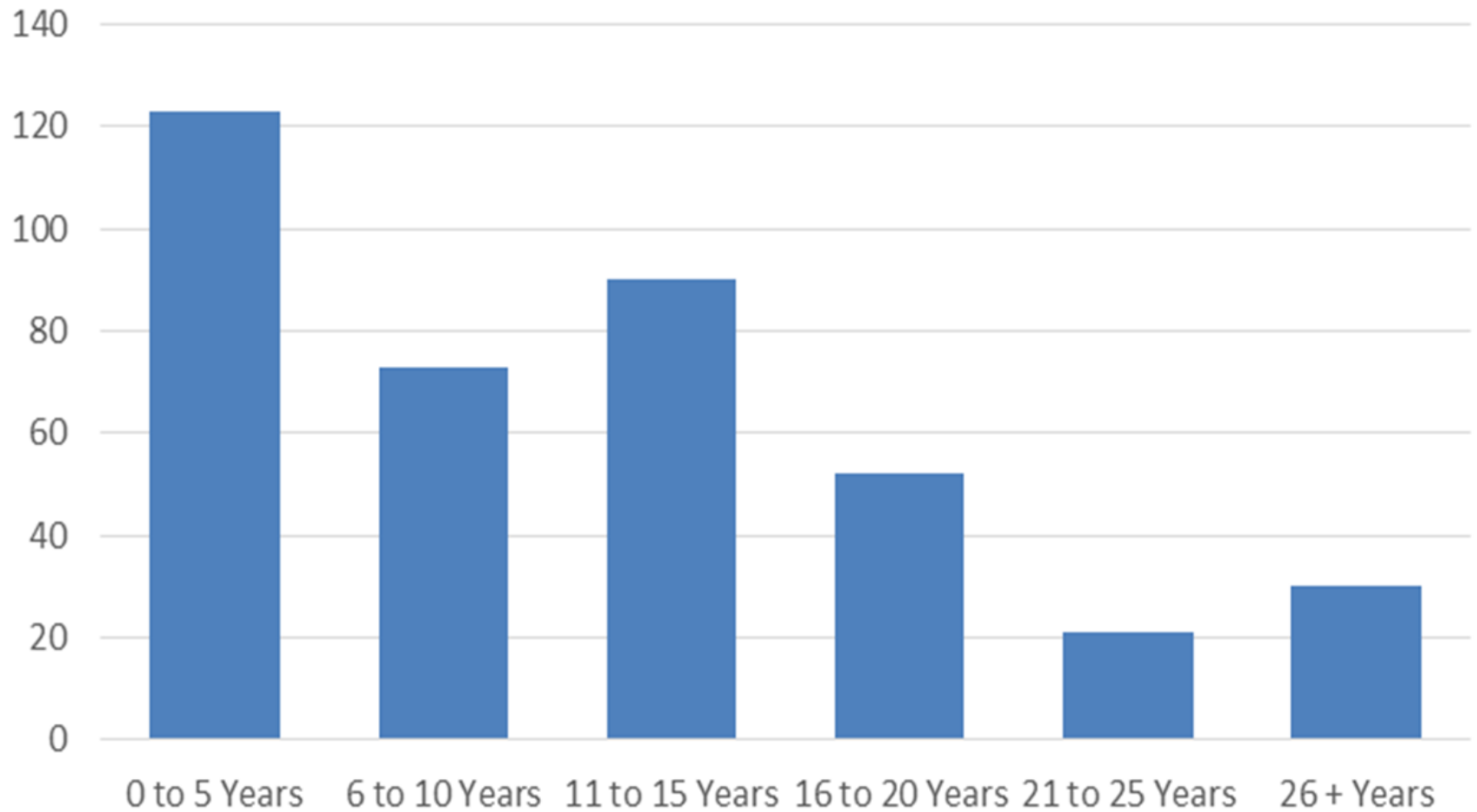
The *Aedes aegypti* mosquito (above) spreads Zika virus, which can cause serious health issues.

PHOTO BY JAMES GRIFFIN, COURTESY CENTERS FOR DISEASE CONTROL AND PREVENTION

Find out what it takes to stop Zika
Please visit dph.georgia.gov/zika

EH Workforce

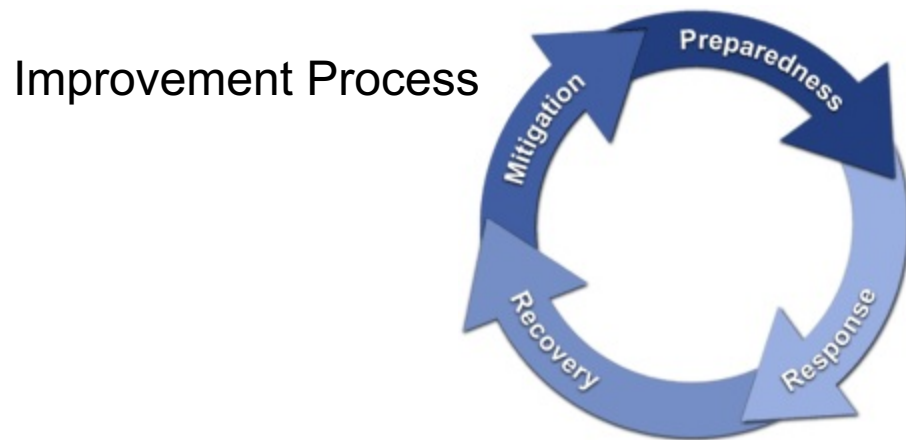
Number of EHS by Years of Service



Disaster Management

EH Strike Teams function within the ICS

- National Incident Management System (NIMS)
 - Incident Command System(ICS)
 - Emergency Support Functions – 15 ESF's



Disaster Cycle

Emergency Preparedness ESF 8

EHS respond to all types of emergencies:

- Mass Feeding facilities
- Mass Shelter facilities
- Water Interruptions
- Portable Sanitation
- Solid Waste Management.
- Vector and Rodent Control
- Situational Awareness
- **Mass Fatality Coordination**
- **EH Strike Teams**



Environmental Health Strike Team Support



We Protect Lives.

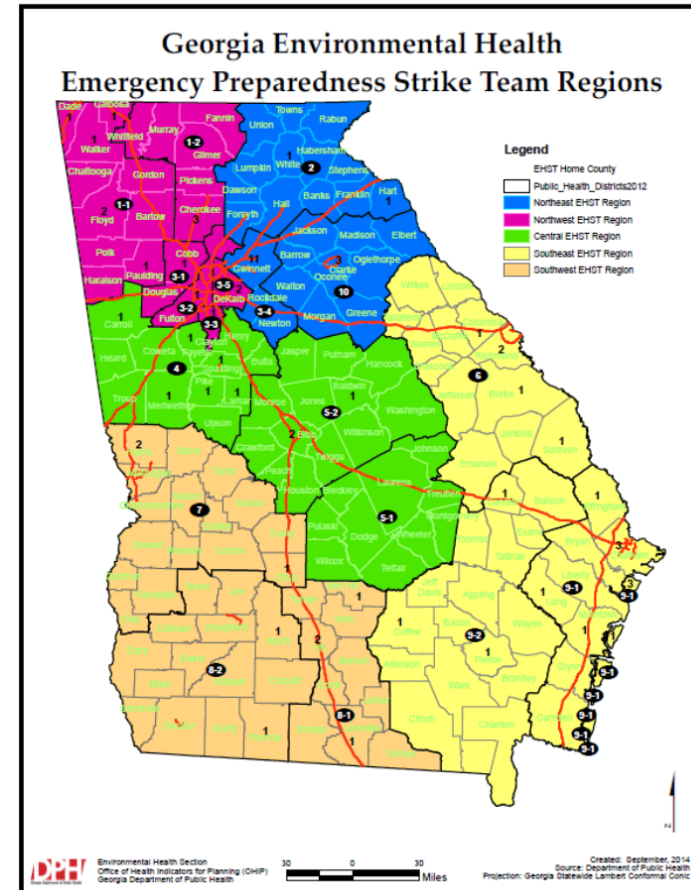
• Environmental Health Strike Teams

– Regional Team Coordination

- 5 Regions

– Environmentalists

- Trained
- Credentialed
- Prepared to Deploy
 - Member Go Bags
 - Team Go Bags
 - Incubators
 - Supplies



- **Environmental Health Strike Teams**
- **Training**
 - EH and EPR Training Programs
 - EHS Standard Training programs
 - Food, TA, Pools, Vector, Land Use, Wells
 - EHTER and EHTER Ops
 - (CDC, fully funded by FEMA)
 - FEMA NIMS / ICS (EMI)
 - EH Shelter Inspections
 - Outbreak / Epi Investigation Assistance
 - **Annual Summit**
 - 2015 AG/Water Well/ARC/Mosquito
 - 2016 Mosquito education and abatement



Additional Training

- WebEOC
- FEMA Training through EMI
 - Independent Study Program
 - <http://training.fema.gov/IS/crslist.aspx>
- Radiation Training
 - Community Reception Center
 - EH Screening
 - Port-O-Monitors
 - Hand Held RadEye Geiger Counters



RadEye B20



Drills and Exercise

TomorrowWorld



- Ga National Fair

**EHTER Ops
2016**



We Protect Lives.

Deployment Activities

Safe Water

Safe Food

Solid Waste

Liquid Waste

Vector Surveillance

Shelter Inspections

Community Reception

Centers

Mold

Septic Systems

Well Water Testing

Other as needed

EH Strike Team Deployment

- Report to the Incident Command Post
 - Check in
 - Report to the team leader
 - Perform the assigned tasks
 - Ask Questions if necessary
 - Within your scope of knowledge
 - May be assigned other task
 - Your safety is number one
 - Proper level of PPE
 - Be aware in a disaster area

Safe Water Supply

- Public Water Supplies
 - Power outages
 - Line breaks
 - Boil Water Advisories
 - Bulk Water Transport
 - Mobile Water Purifiers
- Private- Wells
 - Flooding
 - Sampling
 - Chlorination Instructions



Waste Water Disposal Concerns

- Public Sewers
 - Power outage
 - Lift Stations Failures
 - WW treatment plant
- Septic System Failures
 - Flooding



Portable Sanitation Systems

- Sanitation for human waste
 - May be a major problem
 - concerts / major festivals
 - Location placement is critical
 - Should be
 - Vertical
 - Inspected by EH daily
 - Serviced Daily
 - Approved Company



Refuse and Vector Control

- Pest Control
 - 5~7 Day Mosquito Window
- Window



ESF-6 Support - Shelters

Reasons for Concern

- Close living quarters
- Stressed population
- Disrupted protection systems
- Healthcare maybe limited
- Increased demands on facility
- Place of last resort**



Food in Shelters

- Proper Holding/Cooking Temperatures
- Preparation: Prevent cross contamination
 - No bare hand contact
- Adequate Utensils and thermometers
 - Disposable utensils / WRS
- Hand Washing Facilities
- Source???



Mass Feeding Locations

- Coordinated with
 - EMA, Red Cross, Local governments, Faith Based groups, and the Salvation Army



Stage	Phase Level	Transmission Risk Category
Pre-incident	0	Preparedness: Vector present or possible in the state
	1	Mosquito Season: <i>Aedes aegypti</i> or <i>Aedes albopictus</i> mosquito biting activity. Introduced travel-related, sexually, or other bodily fluid transmitted cases.
Suspected/Confirmed Incident	2	Confirmed Local Transmission: Single, locally-acquired case, or cases clustered in a single household and occurring < 2 weeks apart.
Incident/Response	3	Confirmed Multiperson Local Transmission: Zika virus illnesses with onsets occurring \geq 2 weeks apart but within an approximately 1 mile (1.5 km) diameter.

WE ARE CURRENTLY IN PHASE 1 - MOSQUITO SEASON

Georgia Department of Public Health

Zika Virus Preparedness and Response Plan



Version 1.1, Revised 8/9/16

We Protect Lives.

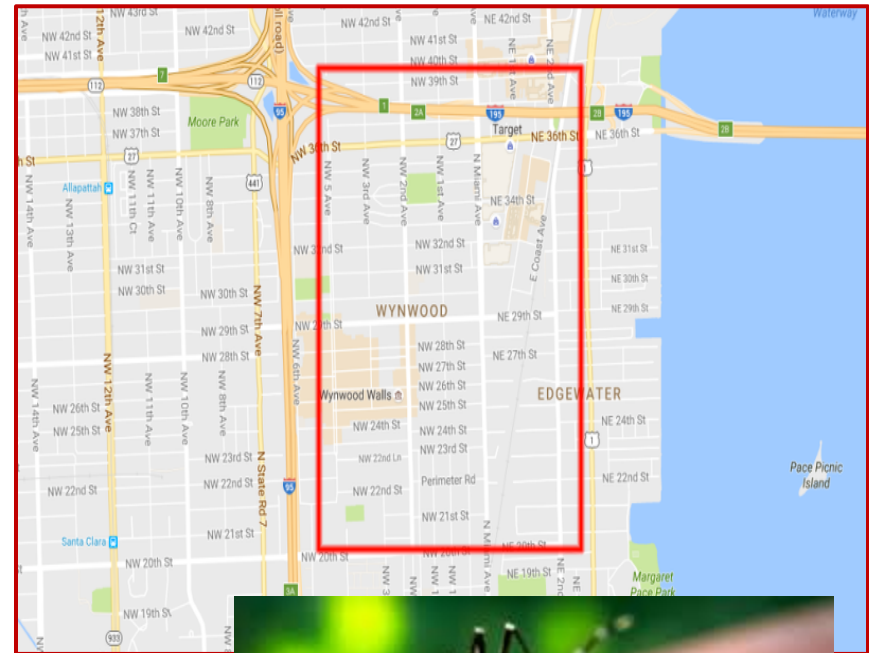
CDC Guidance Change: Response Phases

Stage	Phase Level	Transmission Risk Category
Pre-incident	0	Preparedness: Vector present or possible in the state
	1	Mosquito Season: <i>Aedes aegypti</i> or <i>Aedes albopictus</i> mosquito biting activity. Introduced travel-related, sexually, or other bodily fluid transmitted cases.
Suspected/Confirmed Incident	2	Confirmed Local Transmission: Single, locally-acquired case, or cases clustered in a single household and occurring < 2 weeks apart.
Incident/Response	3	Confirmed Multiperson Local Transmission: Zika virus illnesses with onsets occurring ≥ 2 weeks apart but within an approximately 1 mile (1.5 km) diameter.

July 2016

Georgia Widespread Ongoing Local Acquired Response

- Florida/Miami- Wynwood Neighborhood
- CDC Response Guidelines
- DPH Capacity
 - EPI Case Definition
 - Includes surveillance data
 - VSC and EH Emergency Strike Teams
 - Contingency Contracts
 - Private mosquito control
 - Additional Manpower, Equipment, Expertise



Environmental Health Response

Work Directly with Local Partners with Controlling *Aedes Species (albopictus and aegypti)* in a Focused Area

Action Triggers: Travel and Locally-acquired Zika

CDC Guidelines for Risk Based Zika Action Plans

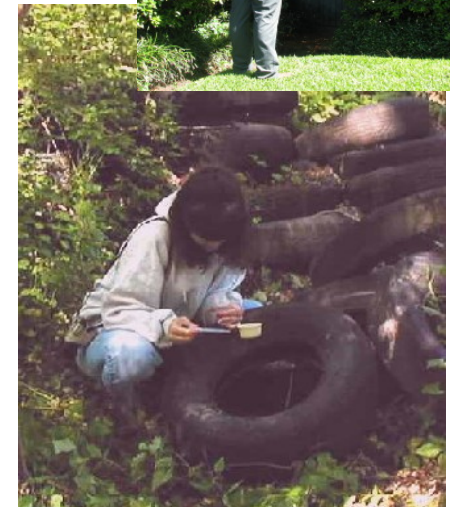
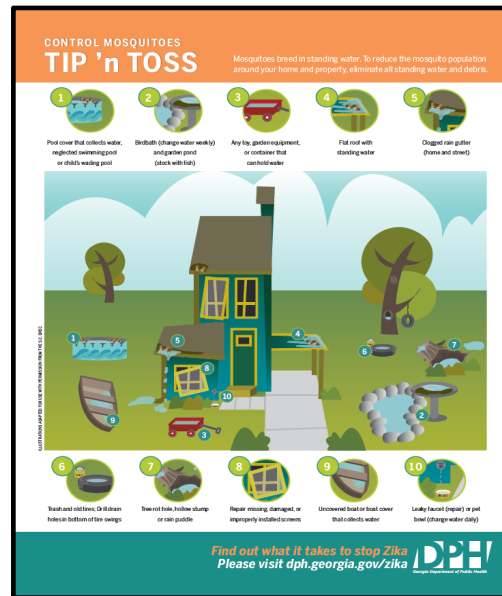
Focus on a positive sample location (Local Transmission) or other area of concern and provide elevated control and education radiating out 150-yard radius and approximately 5 or more blocks or possibly county wide if Widespread Local Transmission.

These Elevated Controls Include:

- Inform Local Mosquito Control
- Surveillance and Testing
- Population Supresion
- Door-to-Door Inspections and Education

Control Measures Would Include Mosquito Population Suppression

- Larviciding (backpack and dunks)
- Barrier sprays for adults
- Possible ULV spraying if wide spread



We Protect Lives.

Contact Information

Byron Lobsinger

Environmental Health

Emergency Planner

Byron.Lobsinger@dph.ga.gov

404-463-2617