

RICHMOND COUNTY MOSQUITO CONTROL



Georgia Department of Public Health

East Central Health District

CUSTOMIZED TRAINING



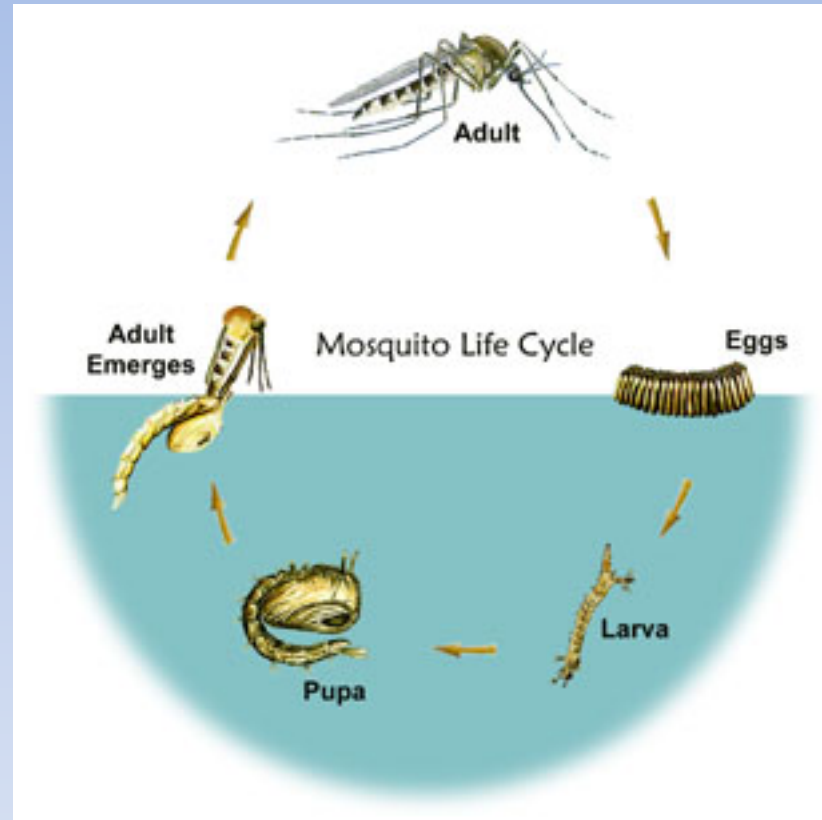
CUSTOMIZED TRAINING SURVEY

- A survey of ten questions was sent out to participants prior to the training to determine areas that needed to be addressed.
- Results were lowest score 40%
- Median score 80%
- Highest score 100%

DESIGNING THE TRAINING

- The questions were designed around what we thought they should know.
- Now to develop the training program to answer these questions.
- We gave general information they could pass on to their clients in the WIC Program.

MOSQUITO LIFE CYCLE



MOSQUITO LARVAE

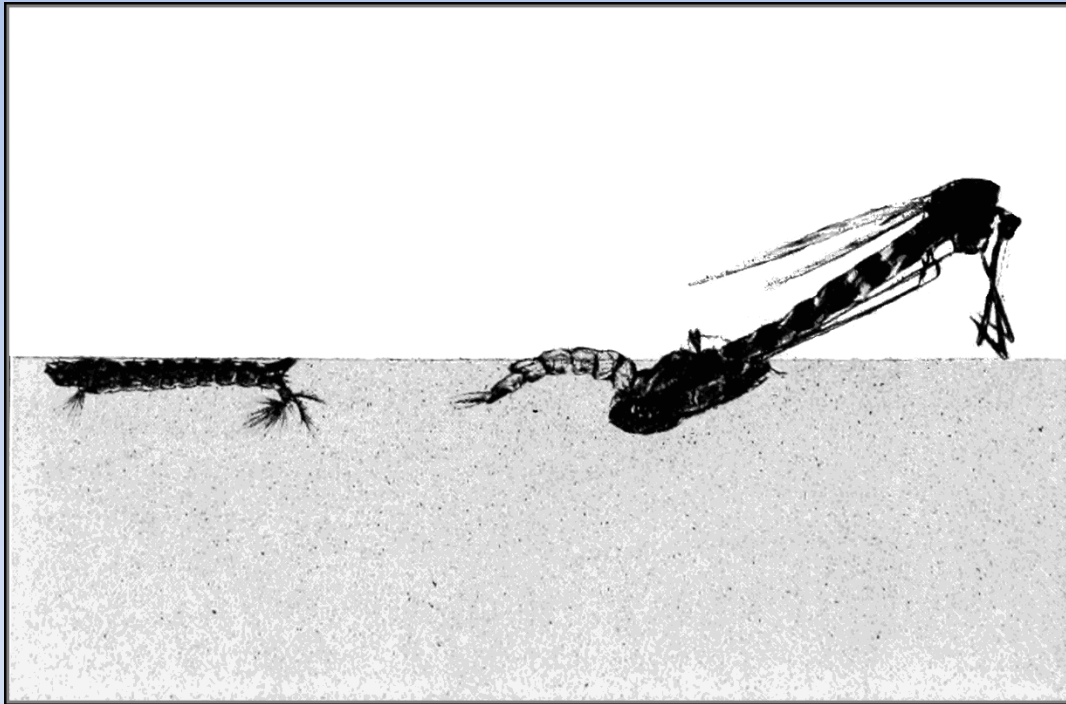


Best time to kill or effect hormones to keep from adulthood

MOSQUITO PUPA



EMERGING ADULT



Hardest to kill in this stage.
Truck spraying is least effective and most
expensive

MOSQUITO PROBOSIS



BREEDING SITES



Mosquito Breeding Site

Note that the end of the corrugated pipe is supported at the end, thus trapping water where mosquitoes will breed.



Mosquito Breeding Site

This trough has been placed backwards to avoid erosion, however it retains enough water to breed mosquitoes.



Good Idea

This drain pipe is angled downwards, allowing all the water to drain out.

BREEDING SITES



BREEDING SITES



BREEDING SITES

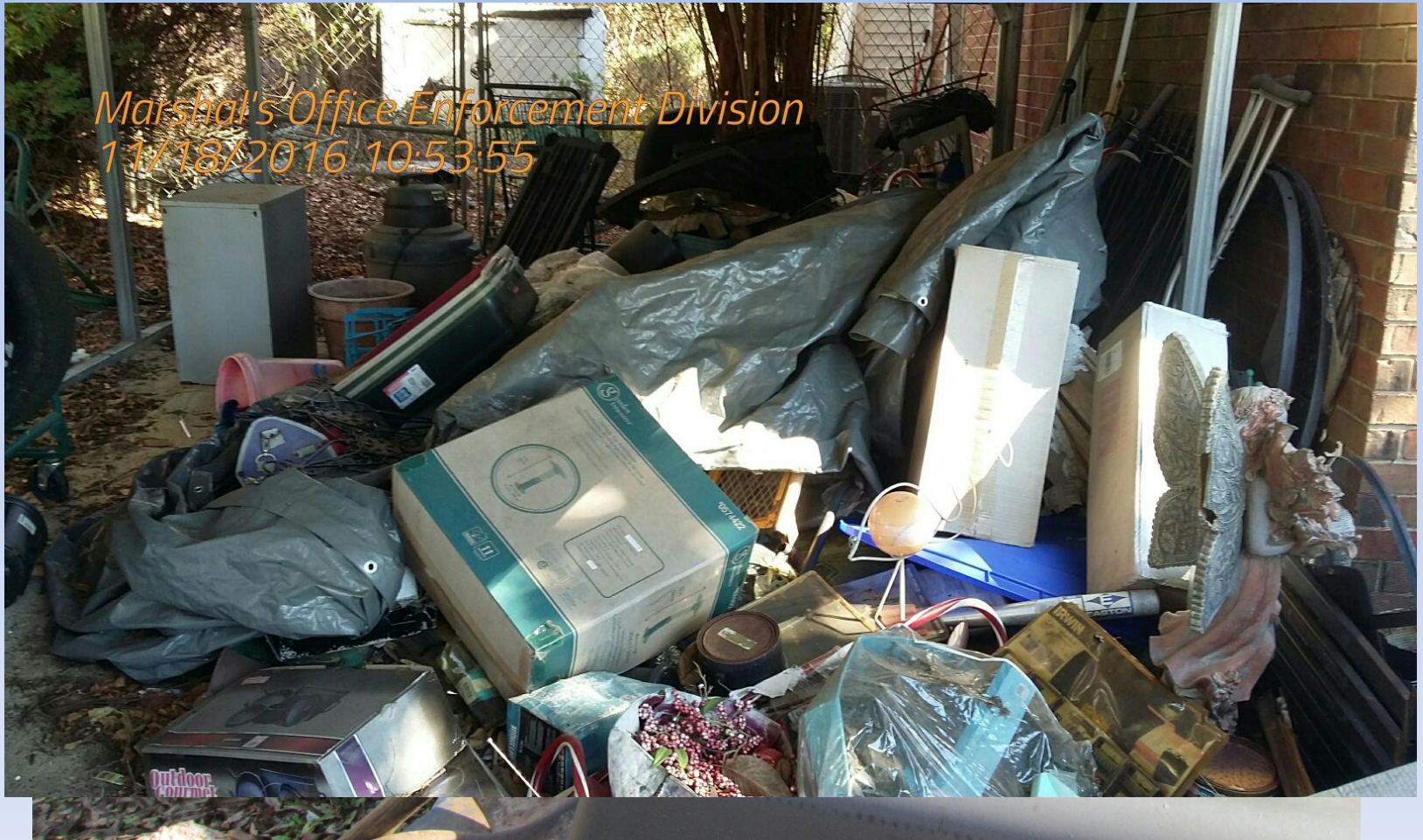


BREEDING SITES



2014.04.25 10:29

BREEDING SITES



BREEDING SITES



BREEDING SITES



MOSQUITO DISEASES

- West Nile Virus
- Eastern Equine Encephalitis
- St. Louis Encephalitis
- Dog Heart Worm
- Dengue Fever
- Malaria
- Yellow Fever
- Chikungunya
- ZIKA Fever

DISEASE NOT CARRIED BY
MOSQUITOES

HIV

MOST IMPORTANT TO YOU IS

- ZIKA Fever
- Young women and children are most effected by this disease.
- As of July 17, 2017
- 1,997 women with lab evidence of ZIKA. US
- 88 live born infants with birth defects
- 8 pregnancy losses with birth defects
- Birth defects *can* show up after birth

LOCAL EXAMPLE



LOCAL EXAMPLE



WHAT'S THIS ?



WHAT DID WE FIND ?



154 *Aedes albopictus* larvae



Aedes albopictus

Life time flight range is 600 feet

Augusta, GA



Disclaimer: While every effort is made to keep information provided over the internet accurate and up-to-date, Augusta does not certify the authenticity or accuracy of such information. No warranties, express or implied, are provided for the records and/or mapping data herein, or for their use or interpretation by the User.

Map Scale
1 inch = 376 feet
7/25/2017

WHAT DID WE FIND ?

- 75 houses within the flight range
 - 2.55 Persons per household
- 191 persons potentially exposed to diseases

WHAT CAN YOU DO?

- Ask them about mosquitoes and what they know.
- Hand out the ZIKA information.
- Explain that there is no vaccine for any mosquito borne disease except Yellow Fever
- Tell them about using condoms for **6 months** if they or their partner have been to an area where ZIKA is active.
- Remind them about birth defects ***even after birth***

WHAT CAN YOU DO?

- Assure the client that they should use a repellent containing DEET. Not suntan lotion or hearts of palm or other home remedies.
- The DPH handouts tells how to use these products.
- We cannot go to other counties but if you or they want more information feel free to contact us and we will be glad to help in any way we can.

- Thank you for your time and attention

POST TRAINING SURVEY

- The same survey was sent out to determine the success of the training.
- Results were lowest score 60%
- Median Score 100%
- Highest score 100%
- 58 people took the pre survey.
- 52 people took the post survey.

WHAT TO DO NOW?

- Any answers below 90% need to be addressed.
- Changes were made in those questions.
- We are now ready to run the program with a different group to see if the changes that were made did make a difference.

THANKS TO

- Dr. Stephen Goggans
- Jonathan Adriano
- Doris Hart
- Sandra Molina
- Joy Miller
- Allen Hillman
- And all the participants